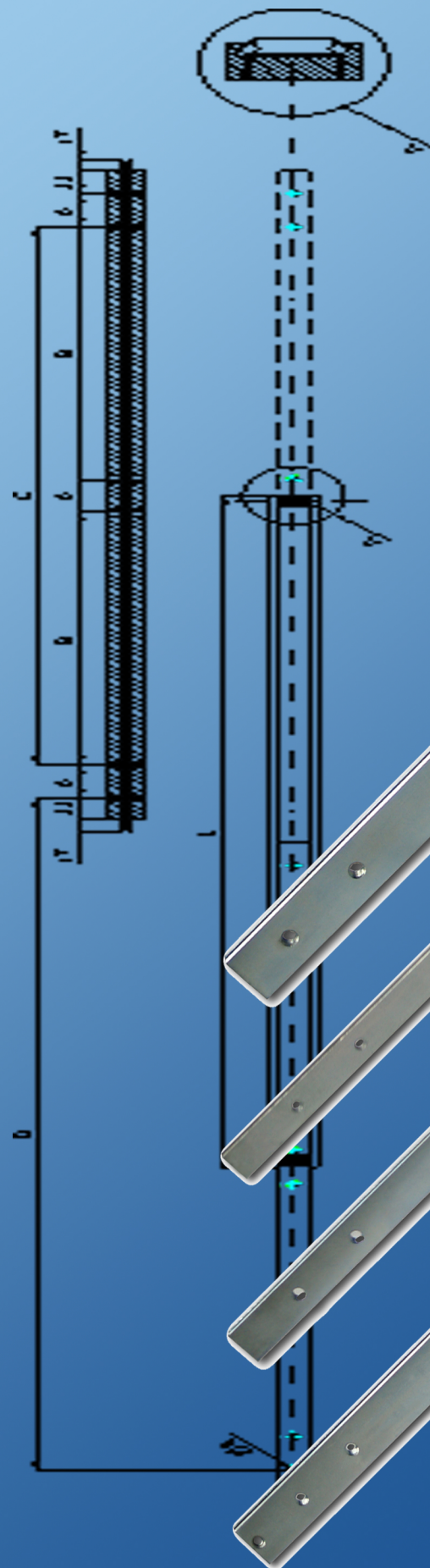


Slides & Rails catalog

S&R
Slides & Rails



LINEAR RAILS

TELESCOPIC SLIDES

<http://slides-rails.eu>
info@slides-rails.eu

Slides&Rails is a specialized distributor of various types of telescopic sliding rails. We can offer standard as well as sliding rails in accordance with your drawings and requirements.

The slides have been designed and developed to function properly in many specific areas and application for the customers, especially in transport of heavy loads and extra lengths, like:

- warehouses and storages
- mechanical industry
- electronic/data processing market
- robotics
- automobile industry
- railway market
- air and sea transport
- military market
- posts and banks

An experienced team is constantly developing our product range in order to meet your specific demands with high quality of the products, permanent quality control and low prices.

Do not hesitate to contact us or visit our website www.slides-rails.eu and get more detailed information.

We are widely opened for further development and expansion of our business activities and are ready to undertake new tasks.

From the team of Slides&Rails

We deliver heavy duty slides to be used in fields where high load capacities, reliability, low deflection and smoothness of movements are important. This allows the design engineers an opportunity to creatively use our slides for best solutions in various applications.

They can be used in a multitude of applications fields and in many different configurations.

***TECHNICAL DESCRIPTION; OPTIONS AVAILABLE; SURFACE TREATMENT;
MOUNTING RECOMMENDATIONS; MAINTENANCE;***

**** Heavy duty slides adjusted to your need**

Wide varieties of slides (more than 30 types) are available with load capacity from few kilos to more than 1400 kilograms.

The performance characteristics given in this catalogue correspond to standard manufacture.

We can offer various dimensions of the main profile, optional lengths, drillings, diameters and hole centers as well as various fixing options.

*** Big variety of dimensions**

Standard slides are produced in different lengths from 200 mm. to 3.000 mm. depending on the type of the slide and the size of the main profile.

*** Material**

Our slides are processed with milling, from cold drawn material in quality C45E+C in accordance with EN 10277.

Standard ball cages are manufactured from zinc plated sheet metal.

Standard balls used are carbon steel C85, G100 in accordance with DIN 5401.

*** Large choice of extensions**

We produce large selection of sliding rails:

- *Partial extension*

(The extension length "D" in our standard slides is the half of the installation length "L"; optionally it can be increased to a maximum of 70% of the installation length "L")

- *Full extension*

(The extension length "D" is equal to the installation length "L")

- *Over extension*

(The extension length "D" is bigger than the installation length "L" depending on the type, given in a separate table for each type of slides)

Selection can be made among various assemblies with 2, 3 or 4 beams, some of them are compatible with double extension ("two way movement" - an extension towards the front or the back of the fixed profile)

The length of extension can be adjusted to the conditions of use or customers requirements and is made in relation to the length of the ball cages. It can be reduced or increased up to 110% of the extensions given in this catalogue.

Standard ball cages are manufactured from zinc plated sheet metal.

Standard balls used are carbon steel C85, G100 in accordance with DIN 5401.

**** Tolerances**

General manufacturing tolerances of our slides conform to js13 standard for drillings and the lengths, while the straightness is 1 mm. / m. and the twisting effect is 1°/ m.

*** Surface treatment**

Our standard surface treatment is electrolytic zinc coating as per ISO 2081 which confirms to RoHS European regulation, with a zinc layer of minimum 8 and an average of 12 microns.

On request we can deliver yellow zinc plating.

*** Temperature**

Standard working temperatures are from -30 to + 110 °C. Beyond this temperature range, special adaptations should be made to obtain smooth performance like using of specific grease for high or low temperatures.

*** Load capacity**

We offer high load capacity slides with compact dimensions.

The maximum safe load capacity is given for a fully extended pair of slides, mounted on the major axis, with a load spread uniformly along the inner beams.

The working loads given in this catalogue include a high safety margin enabling the slides to operate in most applications.

The safe working load depends on the extension, the type of slide and mounting type as well as the frequency of use. This means that increased extension limits the safe load, whereas a reduced extension enables it to increase its performances.

In case of mounting the slides on the minor axis, it is advisable to reduce the safe working load by around 40% depending on the slide. drawn material in quality C45E+C in accordance with EN 10277.

Standard ball cages are manufactured from zinc plated sheet metal.

Standard balls used are carbon steel C85, G100 in accordance with DIN 5401.

*** Deflection**

Deflection is a non permanent deformation measured in mm's when the slides are uniformly loaded, fully extended and mounted on the major axis.

With a mounting on the minor axis, the deflection will be increased.

Maximum deflection of our slides is 1% of the closed length.

*** Recommended speed**

The limits of maximum speed are determined by the mass of the intermediate member which must be pulled by the moving member. The speed diminishes with the increasing length of the slide.

Recommended speed of use of the slides is 0.3 m/s.

*** Mounting**

Our slides are robust and reliable, manufactured for standard use and should be mounted on the major axis, per pair with a uniformly distributed load.

This is the rule for good mounting:

1. Make sure that the slides are parallel and mounted on the major axis
2. Use all the fixings provided
3. Make sure that mounting surfaces are flat and even
4. Apply uniformly distributed load
5. Align fronts of the slides

Following the mounting rules will guarantee smooth and steady running of the slides as well as an optimum lifespan.

Notice!!!

When mounting on the minor axis, the load capacity is reduced by 40% compared to the basic load.

Standard slides can not be used for vertical mounting (up and down) overhanging, excessive heat, corrosive environment or dust.

S&R

Slides&Rails

* **Simple and efficient installation**

Within our production program you will be able to find comprehensive data which will allow you efficient and simple installation: lengths, drilling schemes, loading capacity.

* **Easy maintenance**

The design of our slides enables minimum maintenance operation in most environments. Only under extreme conditions of use they will require some complementary maintenance.

* **Mounting in a polluted environment**

Our slides are delivered without a protection device or system against dust, particles, etc. There is a risk that the presence of impurities in the tracks may rapidly cause jamming, ceasing or premature wear of slides. Therefore it is important to allow slides to be installed in a protected area or to implement the necessary protection measures at the time of the system design.

* **Maintenance, lubrication of slides**

All slides are delivered with a slight lubrication. If necessary, complementary grease can be added to enable an optimal lifespan.

In normal working conditions, it is recommended to lubricate the slides at least every 20.000 cycles although this depends heavily upon the actual conditions and atmosphere of the application.

For critical working conditions, the slides must be lubricated more often.

Before lubricating, the raceways must be cleaned free of any dirt and debris. With the slide in open position, distribute a sufficient quantity of lithium-based medium consistency grease on the races between the inner and outer beam and then in the space between the ball bearings.

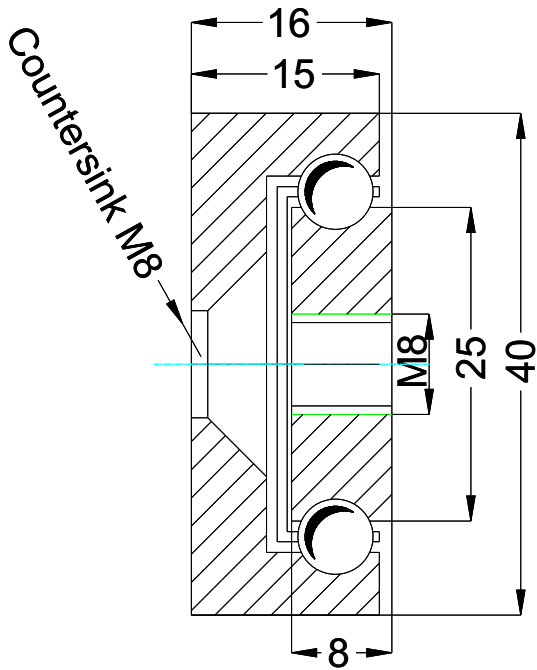
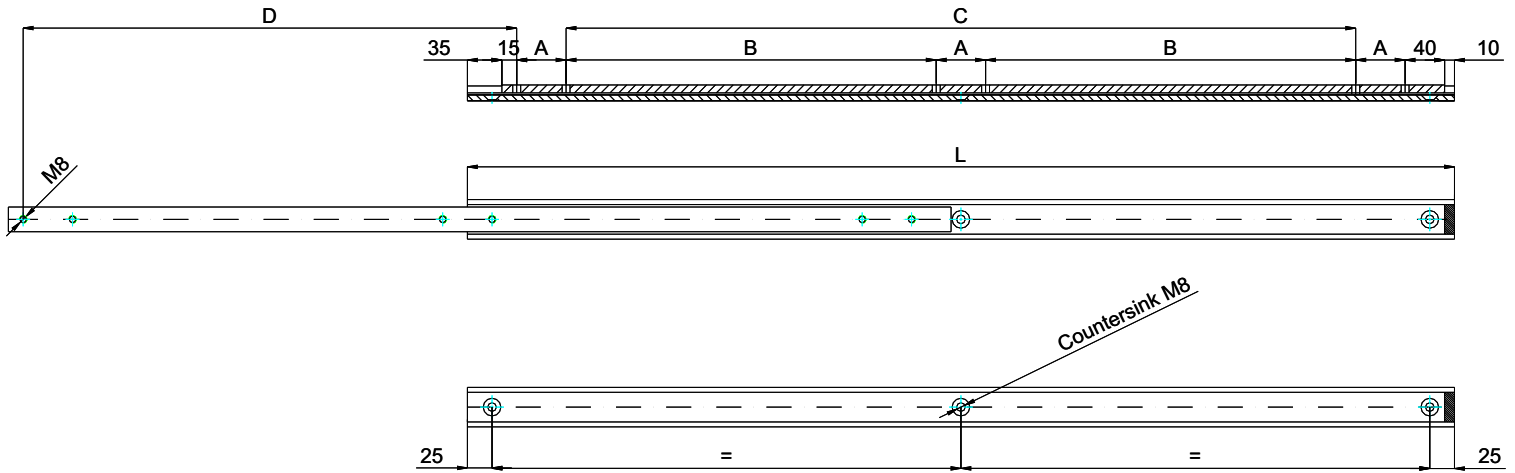
In case of use in aggressive conditions (humidity, dust, abrasive materials...) ensure a systematic and regular maintenance with complete cleaning of the slide and lubrication.

* **Ordering**

Please specify the part number for standard types of sliding rails given in this catalogue. For your specific requirements we can offer various dimensions of the main profile and beam lengths, optional lengths, drillings, diameters and hole centers as well as various fixing options. Send your order to info@slides-rails.eu.

S&R

Slides&Rails



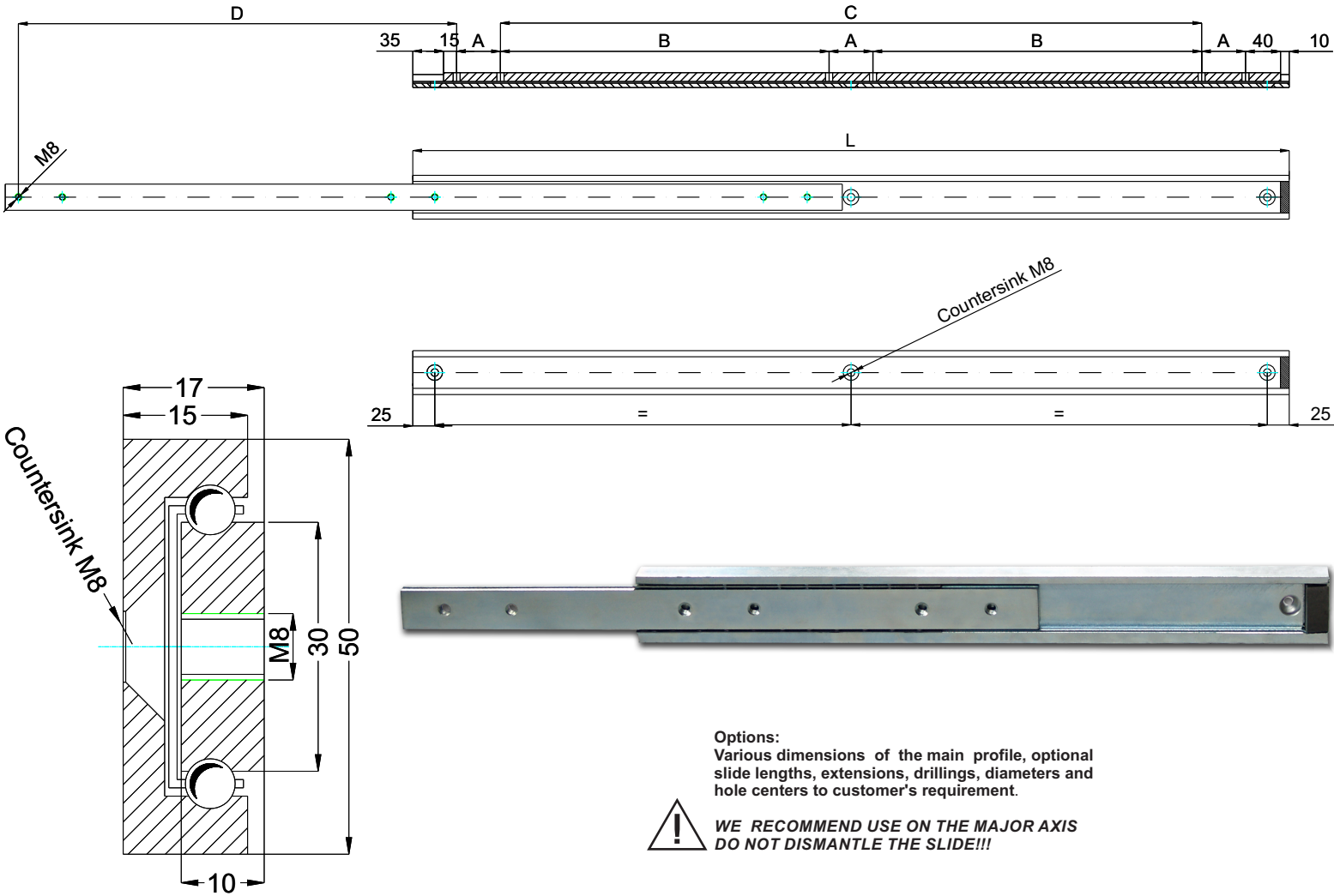
Options:
Various dimensions of the main profile, optional slide lengths, extensions, drillings, diameters and hole centers to customer's requirement.



**WE RECOMMEND USE ON THE MAJOR AXIS
DO NOT DISMANTLE THE SLIDE!!!**

Type: OWS-40			Part No. OWS4016 ...			
Part No.	Installation Length L (mm)	Extension Length D (mm)	* Load per pair (kg)	DRILLING TABLE		
				Dimension A	Dimension B	Dimension C
OWS4016.030	300	150	250	50	---	100
OWS4016.035	350	175	245	50	---	150
OWS4016.040	400	200	240	50	---	200
OWS4016.045	450	225	235	50	---	250
OWS4016.050	500	250	230	50	---	300
OWS4016.055	550	275	225	50	150	---
OWS4016.060	600	300	220	50	175	---
OWS4016.065	650	325	210	50	200	---
OWS4016.070	700	350	205	50	225	---
OWS4016.075	750	375	200	50	250	---
OWS4016.080	800	400	195	50	275	---
OWS4016.085	850	425	190	50	300	---
OWS4016.090	900	450	180	50	325	---
OWS4016.095	950	475	170	50	350	---
OWS4016.100	1000	500	160	50	375	---
OWS4016.105	1050	525	150	50	400	---
OWS4016.110	1100	550	140	50	425	---
OWS4016.115	1150	575	130	50	450	---
OWS4016.120	1200	600	120	50	475	---
OWS4016.125	1250	625	110	50	500	---
OWS4016.130	1300	650	100	50	525	---
OWS4016.135	1350	675	90	50	550	---
OWS4016.140	1400	700	80	50	575	---

* The maximum safe load is given for a fully extended pair of slides, mounted on the major axis, with a load spread uniformly along the inner beam



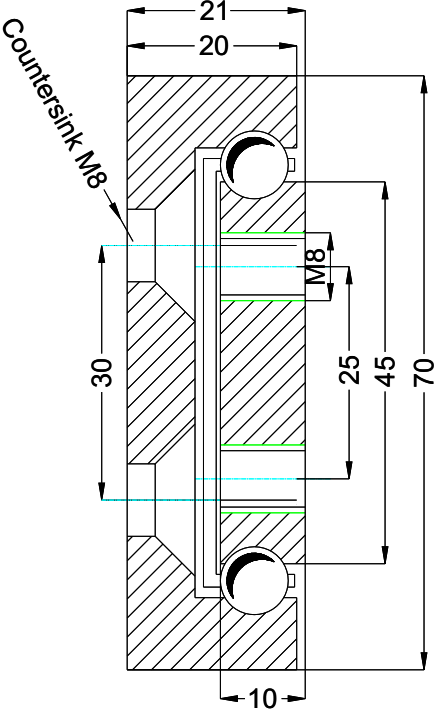
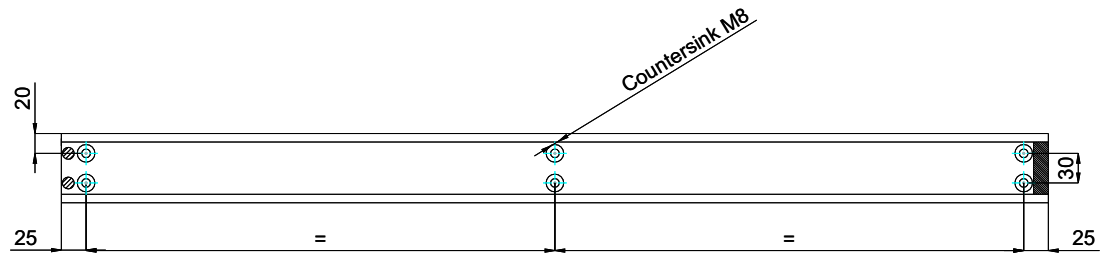
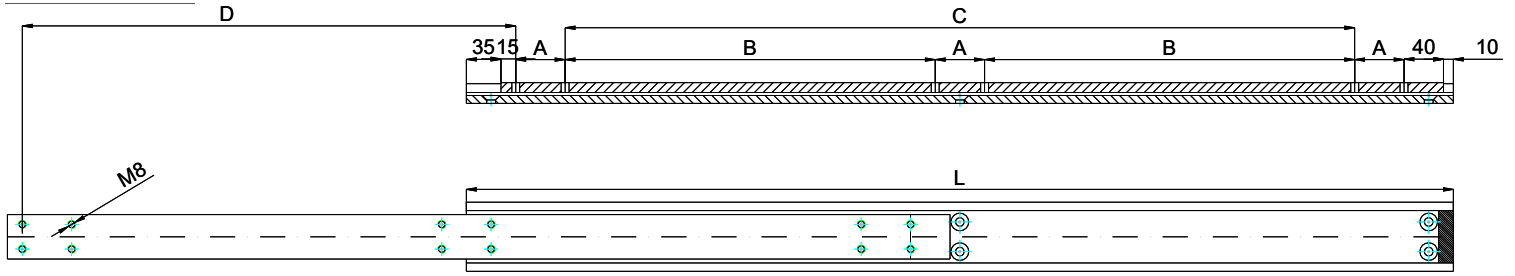
Options:
 Various dimensions of the main profile, optional slide lengths, extensions, drillings, diameters and hole centers to customer's requirement.



**WE RECOMMEND USE ON THE MAJOR AXIS
 DO NOT DISMANTLE THE SLIDE!!!**

Type: OWS-50			Part No. OWS5017 ...			
Part No.	Installation Length L (mm)	Extension Length D (mm)	* Load per pair (kg)	DRILLING TABLE		
				Dimension A	Dimension B	Dimension C
OWS5017.020	200	100	410	50	---	---
OWS5017.025	250	125	400	50	---	50
OWS5017.030	300	150	390	50	---	100
OWS5017.035	350	175	380	50	---	150
OWS5017.040	400	200	370	50	---	200
OWS5017.045	450	225	360	50	---	250
OWS5017.050	500	250	350	50	---	300
OWS5017.055	550	275	340	50	150	---
OWS5017.060	600	300	330	50	175	---
OWS5017.065	650	325	320	50	200	---
OWS5017.070	700	350	310	50	225	---
OWS5017.075	750	375	300	50	250	---
OWS5017.080	800	400	290	50	275	---
OWS5017.085	850	425	280	50	300	---
OWS5017.090	900	450	270	50	325	---
OWS5017.095	950	475	260	50	350	---
OWS5017.100	1000	500	250	50	375	---
OWS5017.105	1050	525	240	50	400	---
OWS5017.110	1100	550	230	50	425	---
OWS5017.115	1150	575	225	50	450	---
OWS5017.120	1200	600	220	50	475	---
OWS5017.125	1250	625	215	50	500	---
OWS5017.130	1300	650	205	50	525	---
OWS5017.135	1350	675	200	50	550	---
OWS5017.140	1400	700	190	50	575	---
OWS5017.145	1450	725	180	50	600	---
OWS5017.150	1500	750	170	50	625	---
OWS5017.155	1550	775	160	50	650	---
OWS5017.160	1600	800	150	50	675	---

* The maximum safe load is given for a fully extended pair of slides, mounted on the major axis, with a load spread uniformly along the inner beam



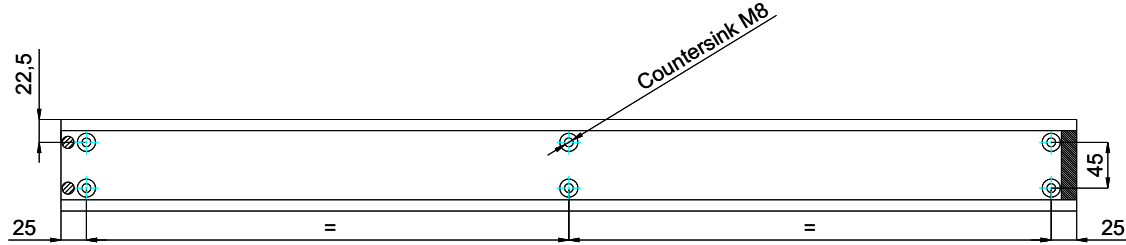
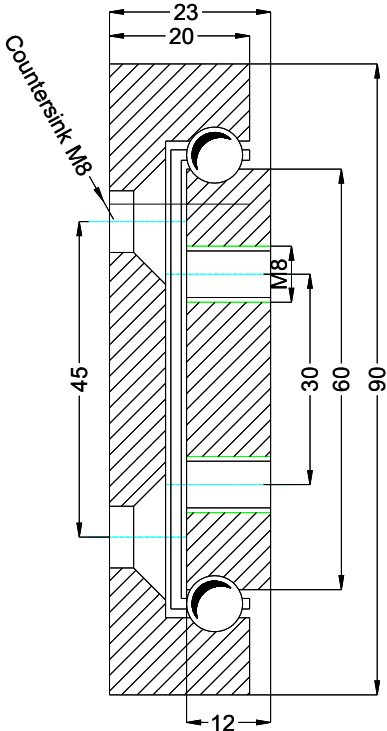
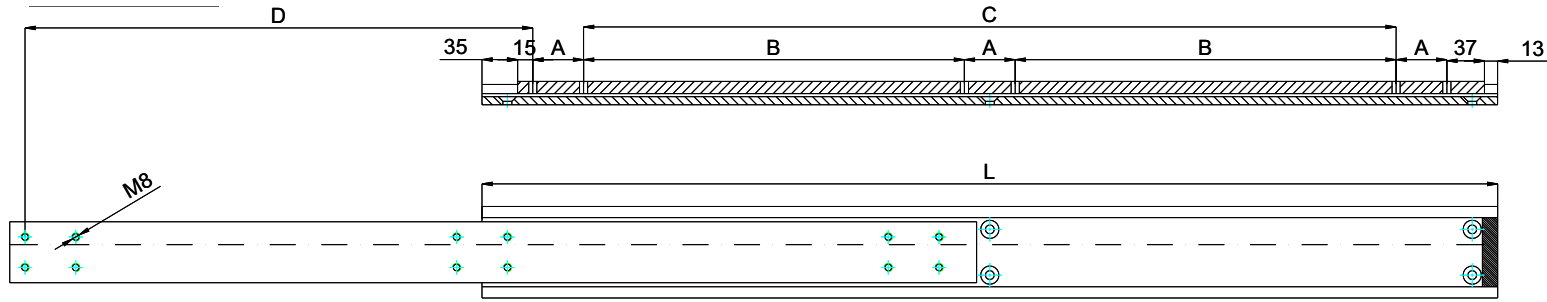
Options:
Various dimensions of the main profile, optional slide lengths, extensions, drillings, diameters and hole centers to customer's requirement.

! WE RECOMMEND USE ON THE MAJOR AXIS
DO NOT DISMANTLE THE SLIDE!!!

Type: OWS-70				Part No. OWS7021 ...		
Part No.	Installation Length L (mm)	Extension Length D (mm)	* Load per pair (kg)	DRILLING TABLE		
				Dimension A	Dimension B	Dimension C
OWS7021.040	400	200	500	50	---	200
OWS7021.045	450	225	490	50	---	250
OWS7021.050	500	250	480	50	---	300
OWS7021.055	550	275	470	50	---	350
OWS7021.060	600	300	460	50	---	400
OWS7021.065	650	325	450	50	200	---
OWS7021.070	700	350	440	50	225	---
OWS7021.075	750	375	440	50	250	---
OWS7021.080	800	400	420	50	275	---
OWS7021.085	850	425	410	50	300	---
OWS7021.090	900	450	400	50	325	---
OWS7021.095	950	475	390	50	350	---
OWS7021.100	1000	500	380	50	375	---
OWS7021.105	1050	525	370	50	400	---
OWS7021.110	1100	550	360	50	425	---
OWS7021.115	1150	575	350	50	450	---
OWS7021.120	1200	600	340	50	475	---
OWS7021.125	1250	625	330	50	500	---
OWS7021.130	1300	650	320	50	525	---
OWS7021.135	1350	675	310	50	550	---
OWS7021.140	1400	700	300	50	575	---
OWS7021.145	1450	725	290	50	600	---
OWS7021.150	1500	750	280	50	625	---
OWS7021.155	1550	775	270	50	650	---
OWS7021.160	1600	800	260	50	675	---
OWS7021.165	1650	825	250	50	700	---
OWS7021.170	1700	850	240	100	650	---
OWS7021.175	1750	875	230	100	675	---
OWS7021.180	1800	900	220	100	700	---
OWS7021.185	1850	925	210	100	725	---
OWS7021.190	1900	950	200	100	750	---
OWS7021.195	1950	975	190	100	775	---
OWS7021.200	2000	1000	180	100	800	---

* The maximum safe load is given for a fully extended pair of slides, mounted on the major axis, with a load spread uniformly along the inner beam

Partial Extension



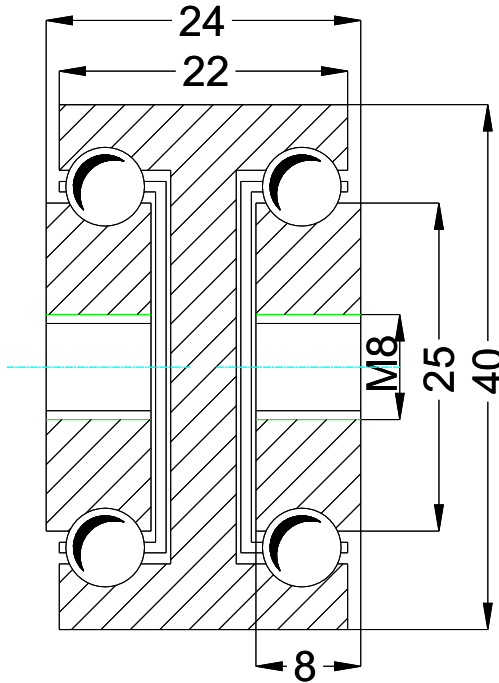
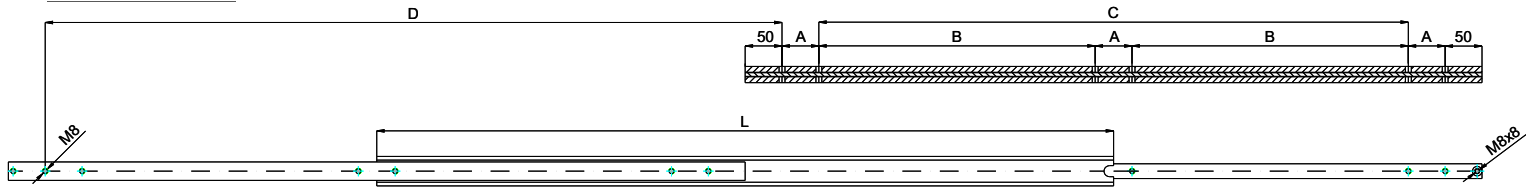
Options:
Various dimensions of the main profile, optional slide lengths, extensions, drillings, diameters and hole centers to customer's requirement.



**WE RECOMMEND USE ON THE MAJOR AXIS
DO NOT DISMANTLE THE SLIDE!!!**

Type: OWS-90				Part No. OWS9023 ...		
Part No.	Installation Length L (mm)	Extension Length D (mm)	* Load per pair (kg)	DRILLING TABLE		
				Dimension A	Dimension B	Dimension C
OWS9023.060	600	300	1000	50	---	400
OWS9023.065	650	325	980	50	200	---
OWS9023.070	700	350	950	50	225	---
OWS9023.075	750	375	920	50	250	---
OWS9023.080	800	400	890	50	275	---
OWS9023.085	850	425	860	50	300	---
OWS9023.090	900	450	830	50	325	---
OWS9023.095	950	475	800	50	350	---
OWS9023.100	1000	500	770	50	375	---
OWS9023.105	1050	525	740	50	400	---
OWS9023.110	1100	550	710	50	425	---
OWS9023.115	1150	575	680	50	450	---
OWS9023.120	1200	600	650	50	475	---
OWS9023.125	1250	625	610	50	500	---
OWS9023.130	1300	650	580	50	525	---
OWS9023.135	1350	675	550	50	550	---
OWS9023.140	1400	700	530	50	575	---
OWS9023.145	1450	725	510	50	600	---
OWS9023.150	1500	750	480	50	625	---
OWS9023.155	1550	775	450	50	650	---
OWS9023.160	1600	800	420	50	675	---
OWS9023.165	1650	825	390	50	700	---
OWS9023.170	1700	850	360	100	650	---
OWS9023.175	1750	875	330	100	675	---
OWS9023.180	1800	900	290	100	700	---
OWS9023.185	1850	925	260	100	725	---
OWS9023.190	1900	950	230	100	750	---
OWS9023.195	1950	975	200	100	775	---
OWS9023.200	2000	1000	170	100	800	---

* The maximum safe load is given for a fully extended pair of slides, mounted on the major axis, with a load spread uniformly along the inner beam



Options:
Various dimensions of the main profile, optional slide lengths, extensions, drillings, diameters and hole centers to customer's requirement.

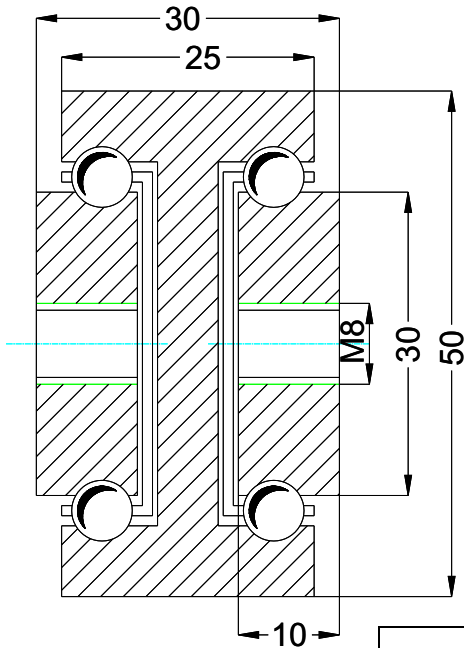
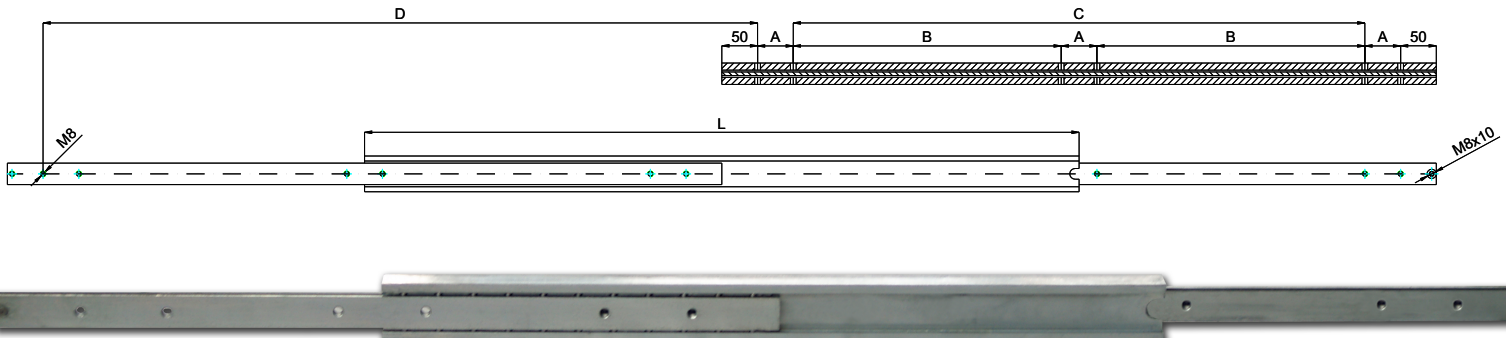


**WE RECOMMEND USE ON THE MAJOR AXIS
DO NOT DISMANTLE THE SLIDE!!!**

Type: DTS-40			Part No. DTS4024 ...			
Part No.	Installation Length L (mm)	Extension Length D (mm)	* Load per pair (kg)	DRILLING TABLE		
				Dimension A	Dimension B	Dimension C
DTS4024.020	200	200	250	50	---	---
DTS4024.025	250	250	245	50	---	50
DTS4024.030	300	300	240	50	---	100
DTS4024.035	350	350	235	50	---	150
DTS4024.040	400	400	230	50	---	200
DTS4024.045	450	450	225	50	---	250
DTS4024.050	500	500	220	50	---	300
DTS4024.055	550	550	210	50	150	---
DTS4024.060	600	600	205	50	175	---
DTS4024.065	650	650	200	50	200	---
DTS4024.070	700	700	195	50	225	---
DTS4024.075	750	750	190	50	250	---
DTS4024.080	800	800	180	50	275	---
DTS4024.085	850	850	170	50	300	---
DTS4024.090	900	900	160	50	325	---
DTS4024.095	950	950	150	50	350	---
DTS4024.100	1000	1000	140	50	375	---
DTS4024.105	1050	1050	130	50	400	---
DTS4024.110	1100	1100	120	50	425	---
DTS4024.115	1150	1150	110	50	450	---
DTS4024.120	1200	1200	100	50	475	---

* The maximum safe load is given for a fully extended pair of slides, mounted on the major axis, with a load spread uniformly along the inner beam

Total Extension



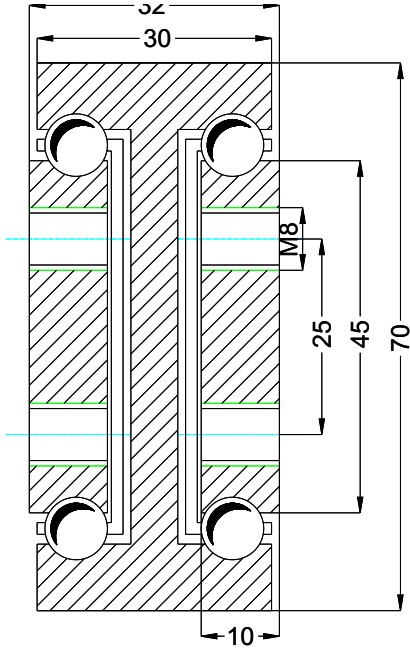
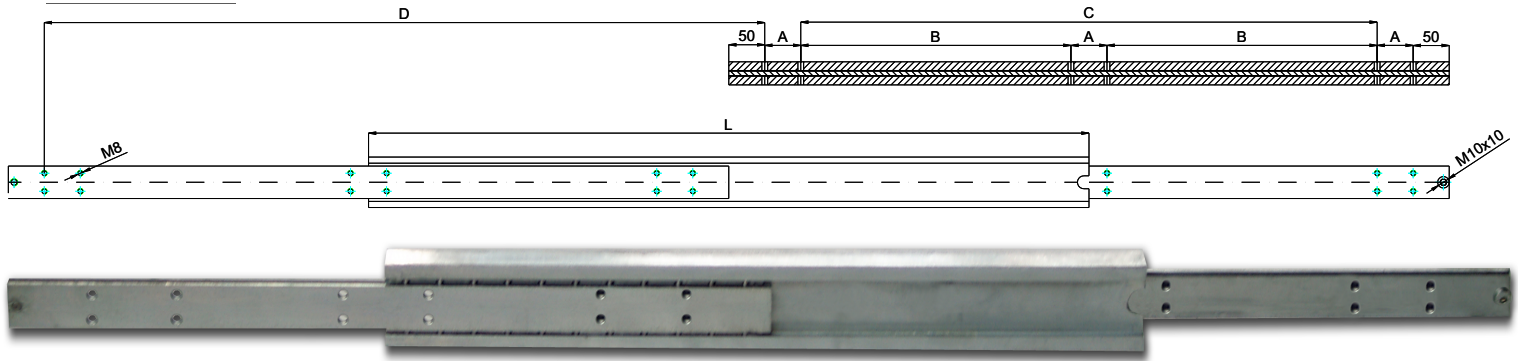
Options:
Various dimensions of the main profile, optional slide lengths, extensions, drillings, diameters and hole centers to customer's requirement.



**WE RECOMMEND USE ON THE MAJOR AXIS
DO NOT DISMANTLE THE SLIDE!!!**

Type: DTS-50			Part No. DTS5030 ...			
Part No.	Installation Length L (mm)	Extension Length D (mm)	* Load per pair (kg)	DRILLING TABLE		
				Dimension A	Dimension B	Dimension C
DTS5030.020	200	200	390	50	---	---
DTS5030.025	250	250	380	50	---	50
DTS5030.030	300	300	370	50	---	100
DTS5030.035	350	350	360	50	---	150
DTS5030.040	400	400	350	50	---	200
DTS5030.045	450	450	340	50	---	250
DTS5030.050	500	500	330	50	---	300
DTS5030.055	550	550	320	50	150	---
DTS5030.060	600	600	310	50	175	---
DTS5030.065	650	650	300	50	200	---
DTS5030.070	700	700	290	50	225	---
DTS5030.075	750	750	280	50	250	---
DTS5030.080	800	800	270	50	275	---
DTS5030.085	850	850	260	50	300	---
DTS5030.090	900	900	250	50	325	---
DTS5030.095	950	950	240	50	350	---
DTS5030.100	1000	1000	230	50	375	---
DTS5030.105	1050	1050	220	50	400	---
DTS5030.110	1100	1100	210	50	425	---
DTS5030.115	1150	1150	205	50	450	---
DTS5030.120	1200	1200	200	50	475	---
DTS5030.125	1250	1250	195	50	500	---
DTS5030.130	1300	1300	190	50	525	---
DTS5030.135	1350	1350	185	50	550	---
DTS5030.140	1400	1400	180	50	575	---
DTS5030.145	1450	1450	170	50	600	---
DTS5030.150	1500	1500	160	50	625	---
DTS5030.155	1550	1550	150	50	650	---
DTS5030.160	1600	1600	140	50	675	---

* The maximum safe load is given for a fully extended pair of slides, mounted on the major axis, with a load spread uniformly along the inner beam



Options:
Various dimensions of the main profile, optional slide lengths, extensions, drillings, diameters and hole centers to customer's requirement.

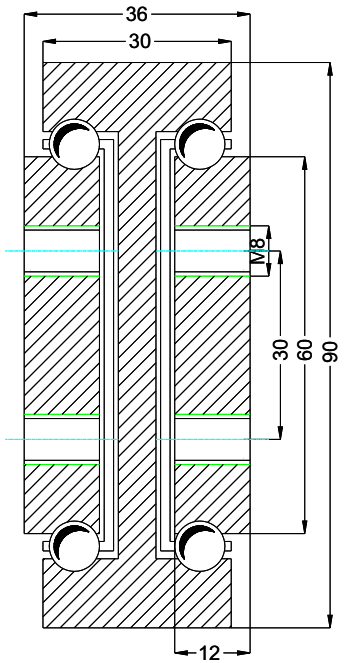
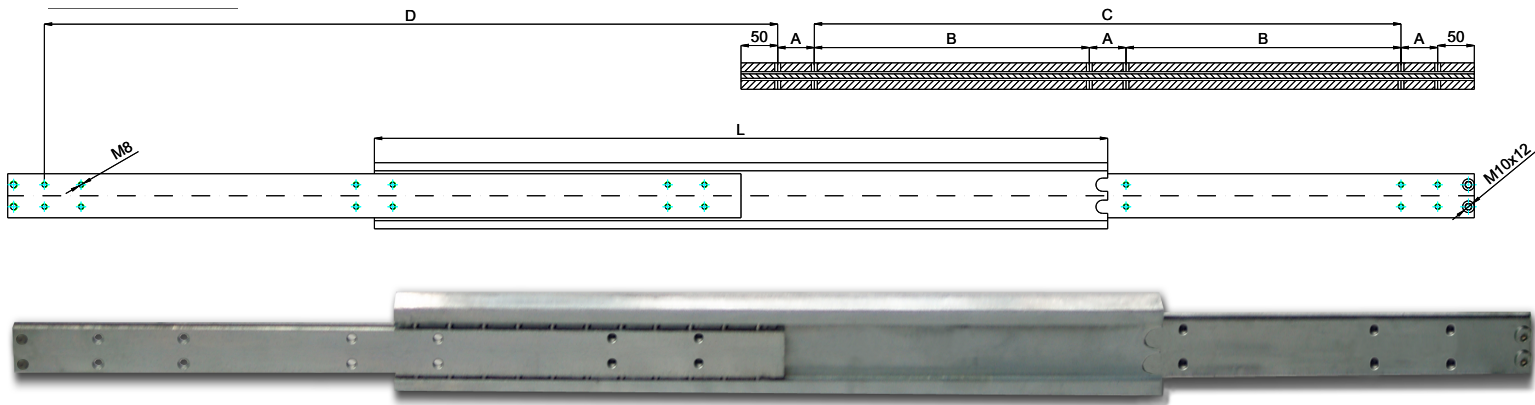


**WE RECOMMEND USE ON THE MAJOR AXIS
DO NOT DISMANTLE THE SLIDE!!!**

Type: DTS-70				Part No. DTS7032 ...		
Part No.	Installation Length L (mm)	Extension Length D (mm)	* Load per pair (kg)	DRILLING TABLE		
				Dimension A	Dimension B	Dimension C
DTS7032.040	400	400	470	50	---	200
DTS7032.045	450	450	460	50	---	250
DTS7032.050	500	500	450	50	---	300
DTS7032.055	550	550	440	50	---	350
DTS7032.060	600	600	430	50	---	400
DTS7032.065	650	650	420	50	200	---
DTS7032.070	700	700	410	50	225	---
DTS7032.075	750	750	400	50	250	---
DTS7032.080	800	800	390	50	275	---
DTS7032.085	850	850	380	50	300	---
DTS7032.090	900	900	370	50	325	---
DTS7032.095	950	950	360	50	350	---
DTS7032.100	1000	1000	350	50	375	---
DTS7032.105	1050	1050	340	50	400	---
DTS7032.110	1100	1100	330	50	425	---
DTS7032.115	1150	1150	320	50	450	---
DTS7032.120	1200	1200	310	50	475	---
DTS7032.125	1250	1250	300	50	500	---
DTS7032.130	1300	1300	290	50	525	---
DTS7032.135	1350	1350	280	50	550	---
DTS7032.140	1400	1400	270	50	575	---
DTS7032.145	1450	1450	260	50	600	---
DTS7032.150	1500	1500	250	50	625	---
DTS7032.155	1550	1550	240	50	650	---
DTS7032.160	1600	1600	230	50	675	---
DTS7032.165	1650	1650	220	50	700	---
DTS7032.170	1700	1700	210	100	650	---
DTS7032.175	1750	1750	200	100	675	---
DTS7032.180	1800	1800	190	100	700	---
DTS7032.185	1850	1850	180	100	725	---
DTS7032.190	1900	1900	170	100	750	---
DTS7032.195	1950	1950	160	100	775	---
DTS7032.200	2000	2000	150	100	800	---

* The maximum safe load is given for a fully extended pair of slides, mounted on the major axis, with a load spread uniformly along the inner beam

 Total Extension



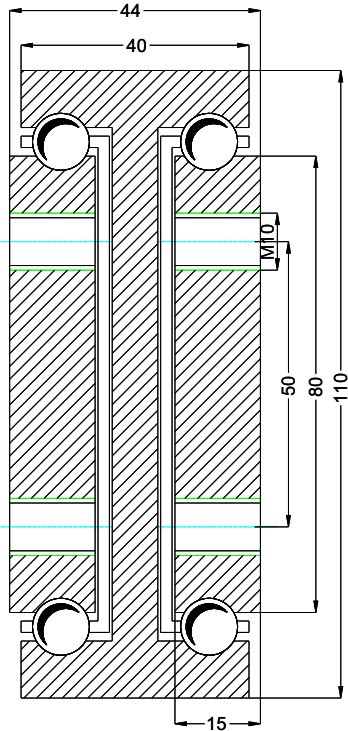
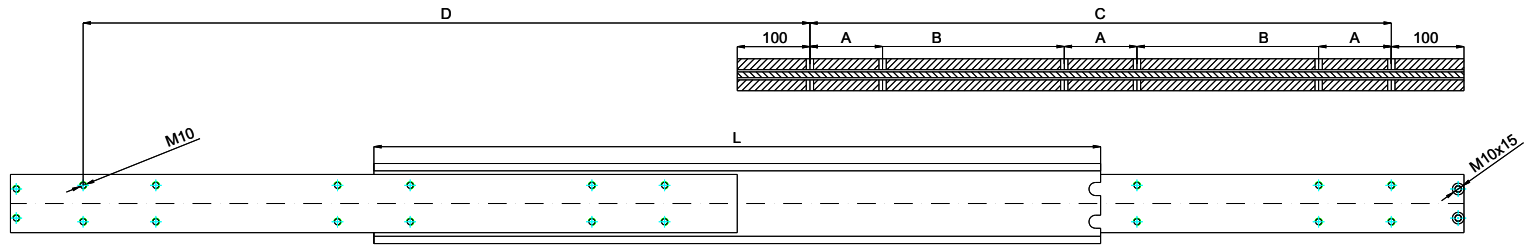
Options:
Various dimensions of the main profile, optional slide lengths, extensions, drillings, diameters and hole centers to customer's requirement.



**WE RECOMMEND USE ON THE MAJOR AXIS
DO NOT DISMANTLE THE SLIDE!!!**

Type: DTS-90				Part No. DTS9036 ...		
Part No.	Installation Length L (mm)	Extension Length D (mm)	* Load per pair (kg)	DRILLING TABLE		
				Dimension A	Dimension B	Dimension C
DTS9036.060	600	600	900	50	---	400
DTS9036.065	650	650	850	50	200	---
DTS9036.070	700	700	800	50	225	---
DTS9036.075	750	750	780	50	250	---
DTS9036.080	800	800	750	50	275	---
DTS9036.085	850	850	710	50	300	---
DTS9036.090	900	900	690	50	325	---
DTS9036.095	950	950	670	50	350	---
DTS9036.100	1000	1000	650	50	375	---
DTS9036.105	1050	1050	620	50	400	---
DTS9036.110	1100	1100	590	50	425	---
DTS9036.115	1150	1150	570	50	450	---
DTS9036.120	1200	1200	550	50	475	---
DTS9036.125	1250	1250	520	50	500	---
DTS9036.130	1300	1300	500	50	525	---
DTS9036.135	1350	1350	480	50	550	---
DTS9036.140	1400	1400	460	50	575	---
DTS9036.145	1450	1450	440	50	600	---
DTS9036.150	1500	1500	420	50	625	---
DTS9036.155	1550	1550	390	50	650	---
DTS9036.160	1600	1600	370	50	675	---
DTS9036.165	1650	1650	350	50	700	---
DTS9036.170	1700	1700	340	100	650	---
DTS9036.175	1750	1750	330	100	675	---
DTS9036.180	1800	1800	320	100	700	---
DTS9036.185	1850	1850	300	100	725	---
DTS9036.190	1900	1900	290	100	750	---
DTS9036.195	1950	1950	270	100	775	---
DTS9036.200	2000	2000	250	100	800	---

* The maximum safe load is given for a fully extended pair of slides, mounted on the major axis, with a load spread uniformly along the inner beam



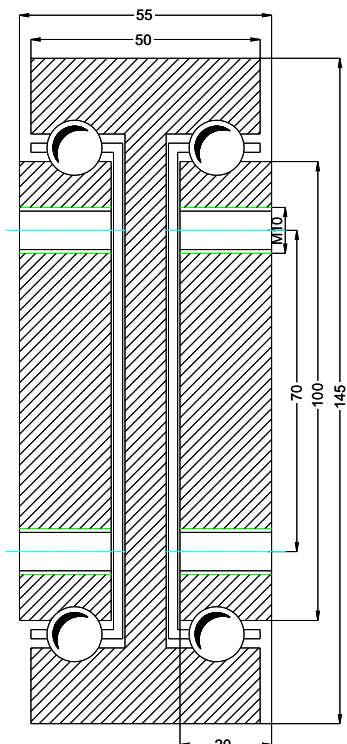
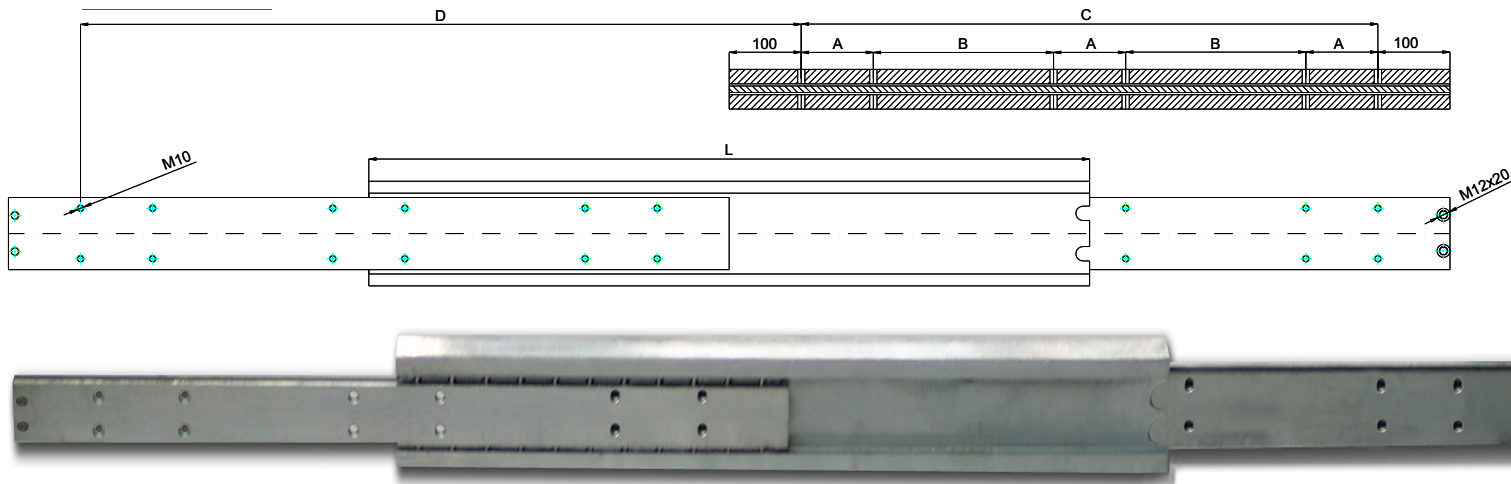
Options:
Various dimensions of the main profile, optional slide lengths, extensions, drillings, diameters and hole centers to customer's requirement.



**WE RECOMMEND USE ON THE MAJOR AXIS
DO NOT DISMANTLE THE SLIDE!!!**

Type: DTS-110				Part No. DTS11044 ...		
Part No.	Installation Length L (mm)	Extension Length D (mm)	* Load per pair (kg)	DRILLING TABLE		
				Dimension A	Dimension B	Dimension C
DTS11044.080	800	800	1200	100	150	---
DTS11044.085	850	850	1150	100	175	---
DTS11044.090	900	900	1100	100	200	---
DTS11044.095	950	950	1050	100	225	---
DTS11044.100	1000	1000	1000	100	250	---
DTS11044.105	1050	1050	950	100	275	---
DTS11044.110	1100	1100	870	100	300	---
DTS11044.115	1150	1150	850	100	325	---
DTS11044.120	1200	1200	780	100	350	---
DTS11044.125	1250	1250	750	100	375	---
DTS11044.130	1300	1300	720	100	400	---
DTS11044.135	1350	1350	700	100	425	---
DTS11044.140	1400	1400	680	100	450	---
DTS11044.145	1450	1450	650	100	475	---
DTS11044.150	1500	1500	620	100	500	---
DTS11044.155	1550	1550	600	100	525	---
DTS11044.160	1600	1600	580	100	550	---
DTS11044.165	1650	1650	550	100	575	---
DTS11044.170	1700	1700	520	100	600	---
DTS11044.175	1750	1750	500	100	625	---
DTS11044.180	1800	1800	480	100	650	---
DTS11044.185	1850	1850	450	100	675	---
DTS11044.190	1900	1900	420	100	700	---
DTS11044.195	1950	1950	400	100	725	---
DTS11044.200	2000	2000	380	100	750	---

* The maximum safe load is given for a fully extended pair of slides, mounted on the major axis, with a load spread uniformly along the inner beam



Options:
Various dimensions of the main profile, optional slide lengths, extensions, drillings, diameters and hole centers to customer's requirement.

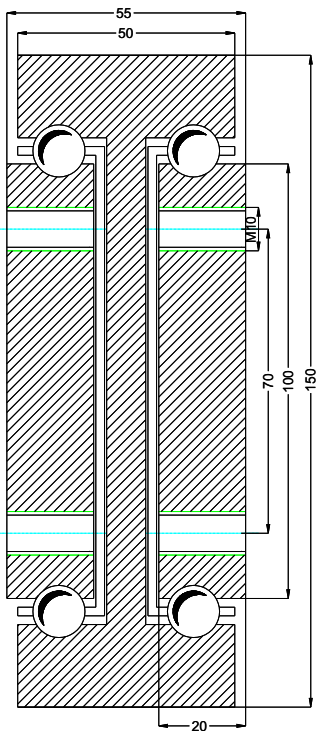
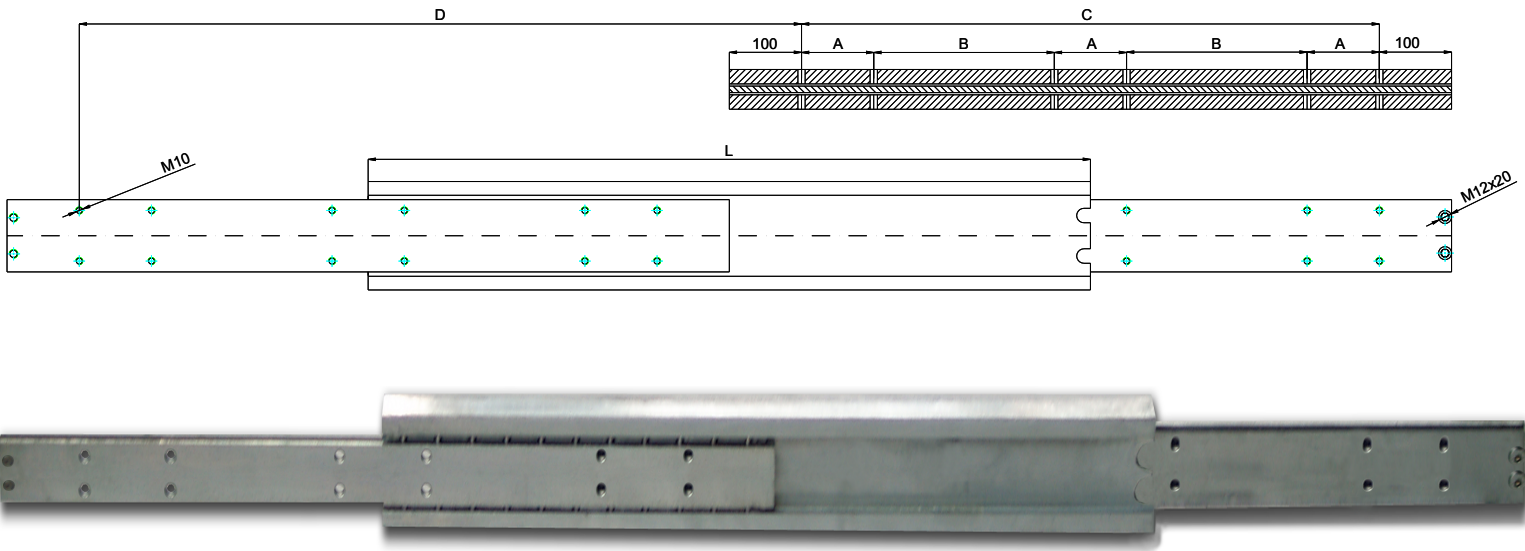


**WE RECOMMEND USE ON THE MAJOR AXIS
DO NOT DISMANTLE THE SLIDE!!!**

Type: DTS-145				Part No. DTS14555 ...		
Part No.	Installation Length L (mm)	Extension Length D (mm)	* Load per pair (kg)	DRILLING TABLE		
				Dimension A	Dimension B	Dimension C
DTS14555.080	800	800	1400	100	150	---
DTS14555.085	850	850	1350	100	175	---
DTS14555.090	900	900	1300	100	200	---
DTS14555.095	950	950	1250	100	225	---
DTS14555.100	1000	1000	1200	100	250	---
DTS14555.105	1050	1050	1180	100	275	---
DTS14555.110	1100	1100	1150	100	300	---
DTS14555.115	1150	1150	1120	100	325	---
DTS14555.120	1200	1200	1100	100	350	---
DTS14555.125	1250	1250	1080	100	375	---
DTS14555.130	1300	1300	1050	100	400	---
DTS14555.135	1350	1350	1020	100	425	---
DTS14555.140	1400	1400	1000	100	450	---
DTS14555.145	1450	1450	980	100	475	---
DTS14555.150	1500	1500	950	100	500	---
DTS14555.155	1550	1550	920	100	525	---
DTS14555.160	1600	1600	900	100	550	---
DTS14555.165	1650	1650	880	100	575	---
DTS14555.170	1700	1700	850	100	600	---
DTS14555.175	1750	1750	820	100	625	---
DTS14555.180	1800	1800	800	100	650	---
DTS14555.185	1850	1850	780	100	675	---
DTS14555.190	1900	1900	750	100	700	---
DTS14555.195	1950	1950	720	100	725	---
DTS14555.200	2000	2000	700	100	750	---
DTS14555.205	2050	2050	670	100	775	---
DTS14555.210	2100	2100	650	100	800	---
DTS14555.215	2150	2150	630	100	825	---
DTS14555.220	2200	2200	600	100	850	---
DTS14555.225	2250	2250	550	100	875	---
DTS14555.230	2300	2300	500	100	900	---
DTS14555.235	2350	2350	450	100	925	---
DTS14555.240	2400	2400	400	100	950	---
DTS14555.245	2450	2450	350	100	975	---
DTS14555.250	2500	2500	300	100	1000	---

*** The maximum safe load is given for a fully extended pair of slides, mounted on the major axis, with a load spread uniformly along the inner beam**

Total Extension



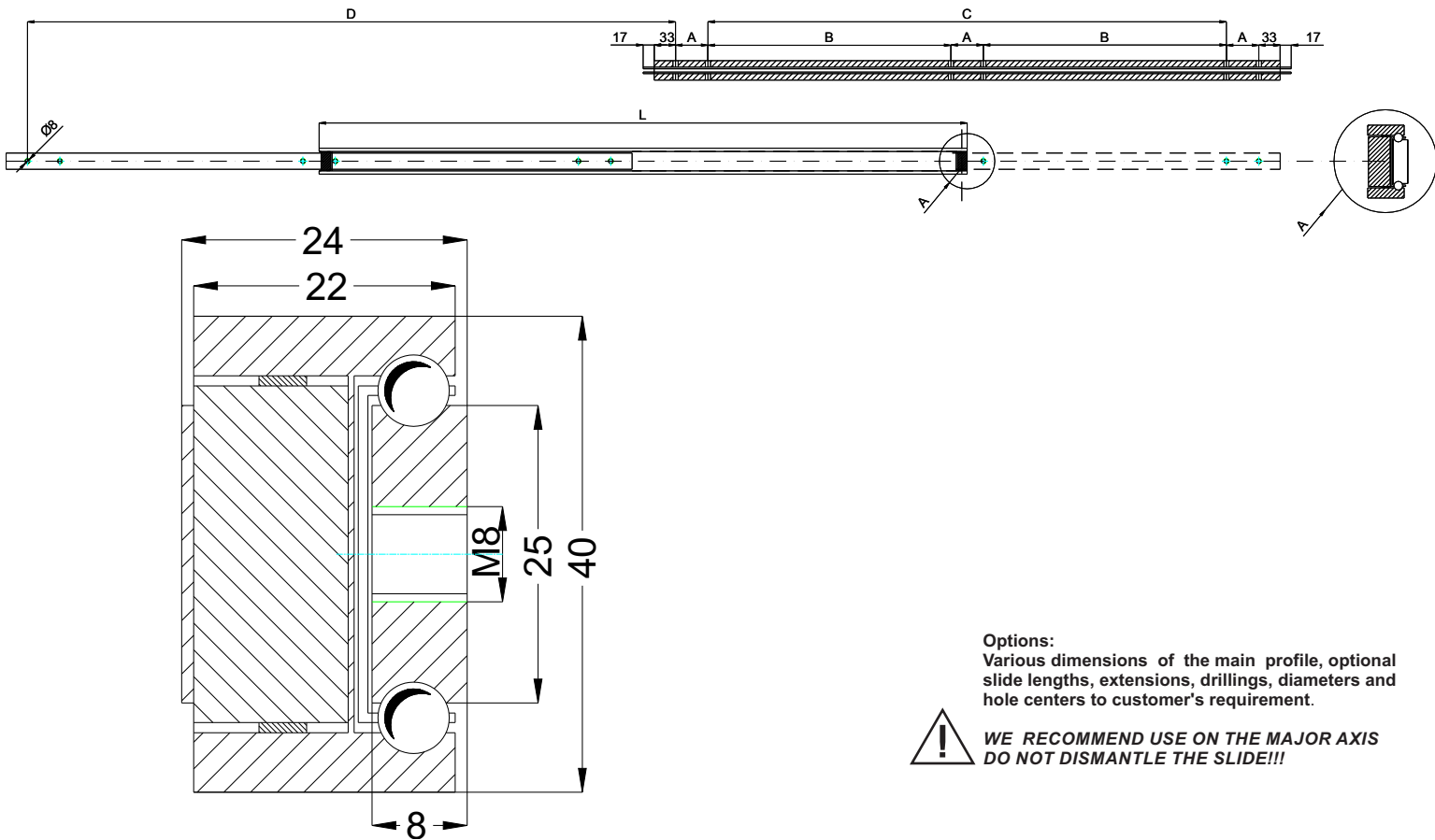
Options:
Various dimensions of the main profile, optional slide lengths, extensions, drillings, diameters and hole centers to customer's requirement.



**WE RECOMMEND USE ON THE MAJOR AXIS
DO NOT DISMANTLE THE SLIDE!!!**

Type: DTS-150				Part No. DTS15055 ...		
Part No.	Installation Length L (mm)	Extension Length D (mm)	* Load per pair (kg)	DRILLING TABLE		
				Dimension A	Dimension B	Dimension C
DTS15055.080	800	800	1500	100	150	---
DTS15055.085	850	850	1450	100	175	---
DTS15055.090	900	900	1400	100	200	---
DTS15055.095	950	950	1350	100	225	---
DTS15055.100	1000	1000	1300	100	250	---
DTS15055.105	1050	1050	1280	100	275	---
DTS15055.110	1100	1100	1250	100	300	---
DTS15055.115	1150	1150	1220	100	325	---
DTS15055.120	1200	1200	1200	100	350	---
DTS15055.125	1250	1250	1180	100	375	---
DTS15055.130	1300	1300	1150	100	400	---
DTS15055.135	1350	1350	1120	100	425	---
DTS15055.140	1400	1400	1100	100	450	---
DTS15055.145	1450	1450	1880	100	475	---
DTS15055.150	1500	1500	1050	100	500	---
DTS15055.155	1550	1550	1020	100	525	---
DTS15055.160	1600	1600	1000	100	550	---
DTS15055.165	1650	1650	980	100	575	---
DTS15055.170	1700	1700	950	100	600	---
DTS15055.175	1750	1750	920	100	625	---
DTS15055.180	1800	1800	900	100	650	---
DTS15055.185	1850	1850	880	100	675	---
DTS15055.190	1900	1900	850	100	700	---
DTS15055.195	1950	1950	820	100	725	---
DTS15055.200	2000	2000	800	100	750	---
DTS15055.205	2050	2050	770	100	775	---
DTS15055.210	2100	2100	750	100	800	---
DTS15055.215	2150	2150	730	100	825	---
DTS15055.220	2200	2200	700	100	850	---
DTS15055.225	2250	2250	650	100	875	---
DTS15055.230	2300	2300	600	100	900	---
DTS15055.235	2350	2350	550	100	925	---
DTS15055.240	2400	2400	500	100	950	---
DTS15055.245	2450	2450	450	100	975	---
DTS15055.250	2500	2500	400	100	1000	---

* The maximum safe load is given for a fully extended pair of slides, mounted on the major axis, with a load spread uniformly along the inner beam



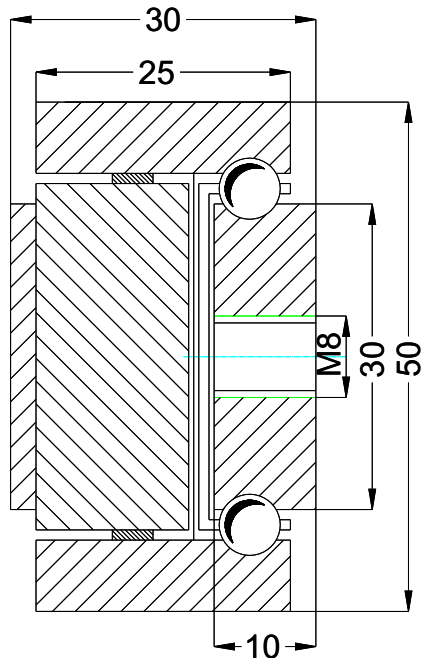
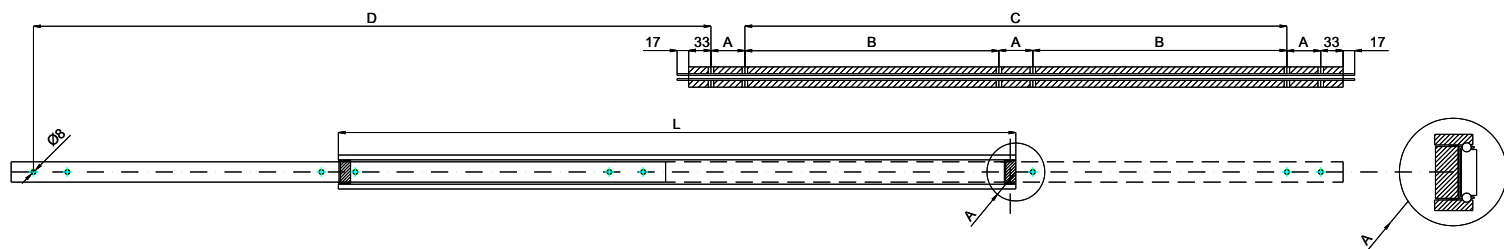
Type: DTBS-40			Part No. DTSB4024 ...			
Part No.	Installation Length L (mm)	Extension Length D (mm)	* Load per pair (kg)	DRILLING TABLE		
				Dimension A	Dimension B	Dimension C
DTSB4024.020	200	200	250	50	---	---
DTSB4024.025	250	250	245	50	---	50
DTSB4024.030	300	300	240	50	---	100
DTSB4024.035	350	350	235	50	---	150
DTSB4024.040	400	400	230	50	---	200
DTSB4024.045	450	450	225	50	---	250
DTSB4024.050	500	500	220	50	---	300
DTSB4024.055	550	550	210	50	150	---
DTSB4024.060	600	600	205	50	175	---
DTSB4024.065	650	650	200	50	200	---
DTSB4024.070	700	700	195	50	225	---
DTSB4024.075	750	750	190	50	250	---
DTSB4024.080	800	800	180	50	275	---
DTSB4024.085	850	850	170	50	300	---
DTSB4024.090	900	900	160	50	325	---
DTSB4024.095	950	950	150	50	350	---
DTSB4024.100	1000	1000	140	50	375	---
DTSB4024.105	1050	1050	130	50	400	---
DTSB4024.110	1100	1100	120	50	425	---
DTSB4024.115	1150	1150	110	50	450	---
DTSB4024.120	1200	1200	100	50	475	---

* The maximum safe load is given for a fully extended pair of slides, mounted on the major axis, with a load spread uniformly along the inner beam

TELESCOPIC SLIDE

TYPE - DTSB

S&R
Slides&Rails



Options:
Various dimensions of the main profile, optional slide lengths, extensions, drillings, diameters and hole centers to customer's requirement.

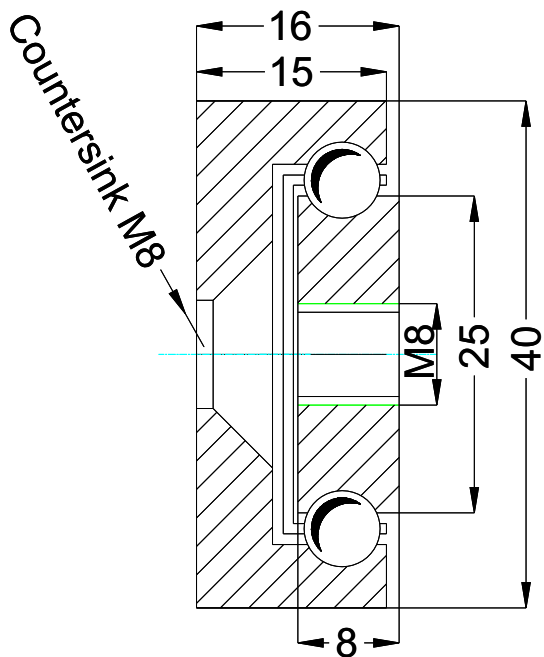
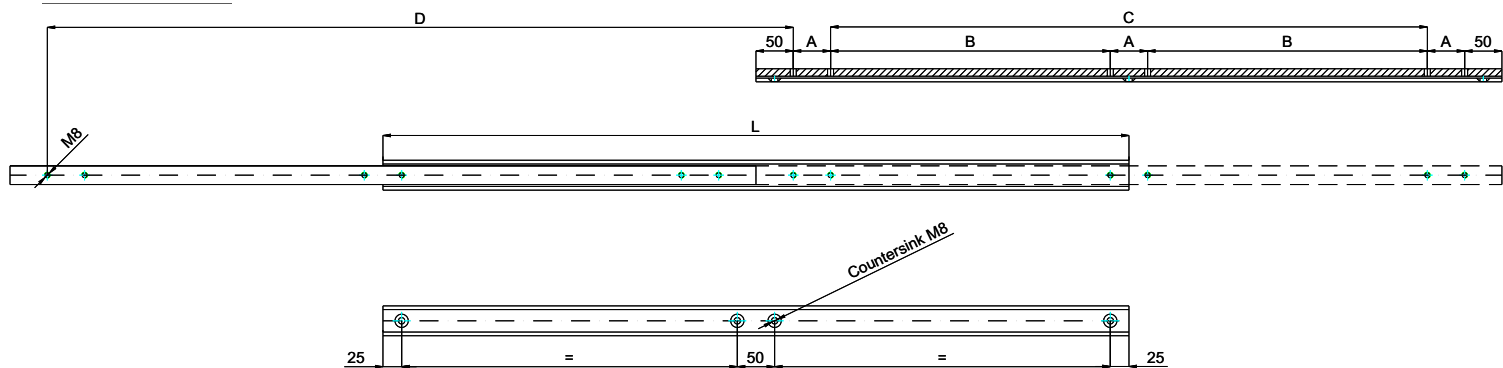


**WE RECOMMEND USE ON THE MAJOR AXIS
DO NOT DISMANTLE THE SLIDE!!!**



Type: DTSB-50			Part No. DTSB5030 ...			
Part No.	Installation Length L (mm)	Extension Length D (mm)	* Load per pair (kg)	DRILLING TABLE		
				Dimension A	Dimension B	Dimension C
DTSB5030.030	300	300	370	50	---	100
DTSB5030.035	350	350	360	50	---	150
DTSB5030.040	400	400	350	50	---	200
DTSB5030.045	450	450	340	50	---	250
DTSB5030.050	500	500	330	50	---	300
DTSB5030.055	550	550	320	50	150	---
DTSB5030.060	600	600	310	50	175	---
DTSB5030.065	650	650	300	50	200	---
DTSB5030.070	700	700	290	50	225	---
DTSB5030.075	750	750	280	50	250	---
DTSB5030.080	800	800	270	50	275	---
DTSB5030.085	850	850	260	50	300	---
DTSB5030.090	900	900	250	50	325	---
DTSB5030.095	950	950	240	50	350	---
DTSB5030.100	1000	1000	230	50	375	---
DTSB5030.105	1050	1050	220	50	400	---
DTSB5030.110	1100	1100	210	50	425	---
DTSB5030.115	1150	1150	205	50	450	---
DTSB5030.120	1200	1200	200	50	475	---
DTSB5030.125	1250	1250	195	50	500	---
DTSB5030.130	1300	1300	190	50	525	---
DTSB5030.135	1350	1350	185	50	550	---
DTSB5030.140	1400	1400	180	50	575	---
DTSB5030.145	1450	1450	170	50	600	---
DTSB5030.150	1500	1500	160	50	625	---
DTSB5030.155	1550	1550	150	50	650	---
DTSB5030.160	1600	1600	140	50	675	---

* The maximum safe load is given for a fully extended pair of slides, mounted on the major axis, with a load spread uniformly along the inner beam



Options:
Various dimensions of the main profile, optional slide lengths, extensions, drillings, diameters and hole centers to customer's requirement.



**WE RECOMMEND USE ON THE MAJOR AXIS
DO NOT DISMANTLE THE SLIDE!!!**

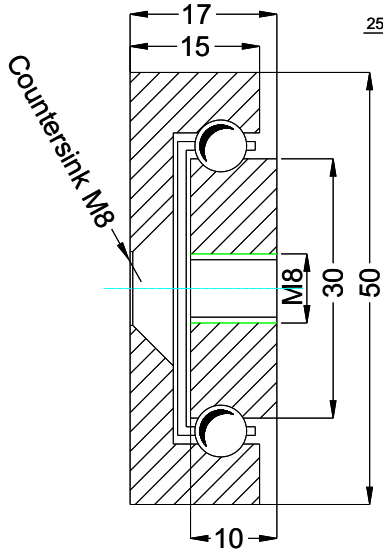
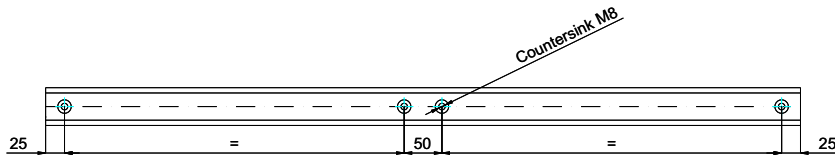
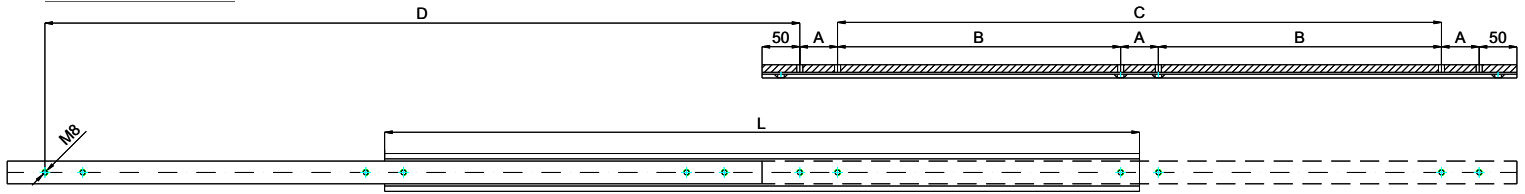


Type: OWST-40			Part No. OWST4016 ...			
Part No.	Installation Length L (mm)	Extension Length D (mm)	* Load per pair (kg)	DRILLING TABLE		
				Dimension A	Dimension B	Dimension C
OWST4016.030	300	300	240	50	---	100
OWST4016.035	350	350	235	50	---	150
OWST4016.040	400	400	230	50	---	200
OWST4016.045	450	450	225	50	---	250
OWST4016.050	500	500	220	50	---	300
OWST4016.055	550	550	210	50	150	---
OWST4016.060	600	600	205	50	175	---
OWST4016.065	650	650	200	50	200	---
OWST4016.070	700	700	195	50	225	---
OWST4016.075	750	750	190	50	250	---
OWST4016.080	800	800	180	50	275	---
OWST4016.085	850	850	170	50	300	---
OWST4016.090	900	900	160	50	325	---
OWST4016.095	950	950	150	50	350	---
OWST4016.100	1000	1000	140	50	375	---
OWST4016.105	1050	1050	130	50	400	---
OWST4016.110	1100	1100	120	50	425	---
OWST4016.115	1150	1150	110	50	450	---
OWST4016.120	1200	1200	100	50	475	---

* The maximum safe load is given for a fully extended pair of slides, mounted on the major axis, with a load spread uniformly along the inner beam



Total Extension



Options:
Various dimensions of the main profile, optional slide lengths, extensions, drillings, diameters and hole centers to customer's requirement.

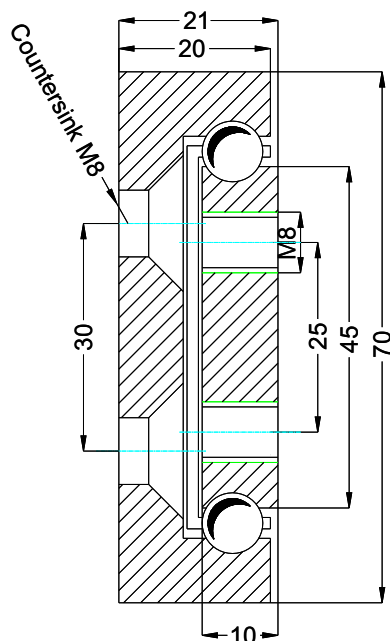
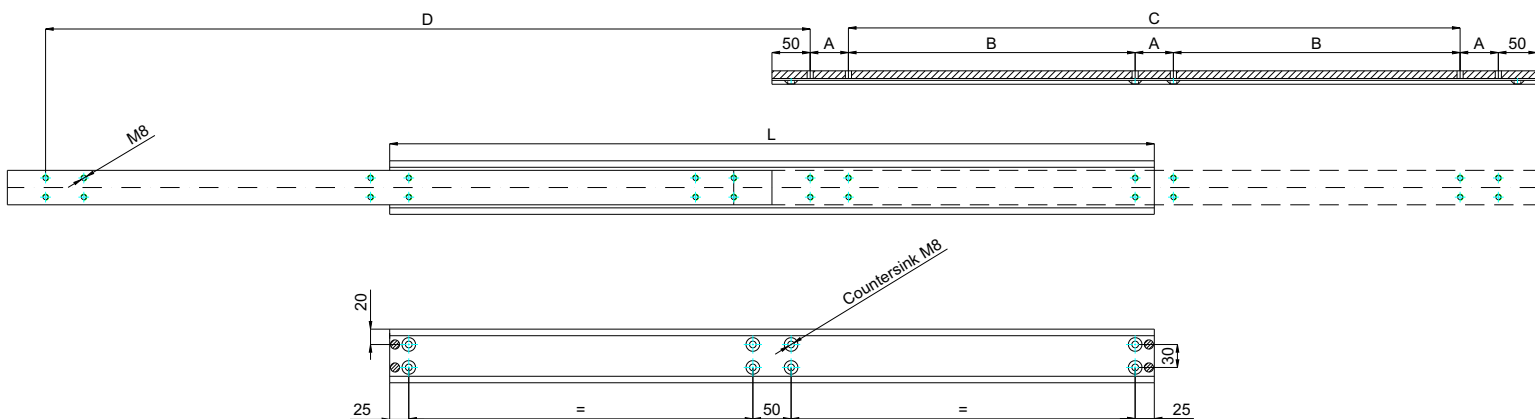


**WE RECOMMEND USE ON THE MAJOR AXIS
DO NOT DISMANTLE THE SLIDE!!!**



Type: OWST-50			Part No. OWST5017 ...			
Part No.	Installation Length L (mm)	Extension Length D (mm)	* Load per pair (kg)	DRILLING TABLE		
				Dimension A	Dimension B	Dimension C
OWST5017.030	300	300	390	50	---	100
OWST5017.035	350	350	380	50	---	150
OWST5017.040	400	400	370	50	---	200
OWST5017.045	450	450	360	50	---	250
OWST5017.050	500	500	350	50	---	300
OWST5017.055	550	550	340	50	150	---
OWST5017.060	600	600	330	50	175	---
OWST5017.065	650	650	320	50	200	---
OWST5017.070	700	700	310	50	225	---
OWST5017.075	750	750	300	50	250	---
OWST5017.080	800	800	290	50	275	---
OWST5017.085	850	850	280	50	300	---
OWST5017.090	900	900	270	50	325	---
OWST5017.095	950	950	260	50	350	---
OWST5017.100	1000	1000	250	50	375	---
OWST5017.105	1050	1050	240	50	400	---
OWST5017.110	1100	1100	230	50	425	---
OWST5017.115	1150	1150	225	50	450	---
OWST5017.120	1200	1200	220	50	475	---
OWST5017.125	1250	1250	215	50	500	---
OWST5017.130	1300	1300	205	50	525	---
OWST5017.135	1350	1350	200	50	550	---
OWST5017.140	1400	1400	190	50	575	---
OWST5017.145	1450	1450	180	50	600	---
OWST5017.150	1500	1500	170	50	625	---
OWST5017.155	1550	1550	160	50	650	---
OWST5017.160	1600	1600	150	50	675	---

* The maximum safe load is given for a fully extended pair of slides, mounted on the major axis, with a load spread uniformly along the inner beam



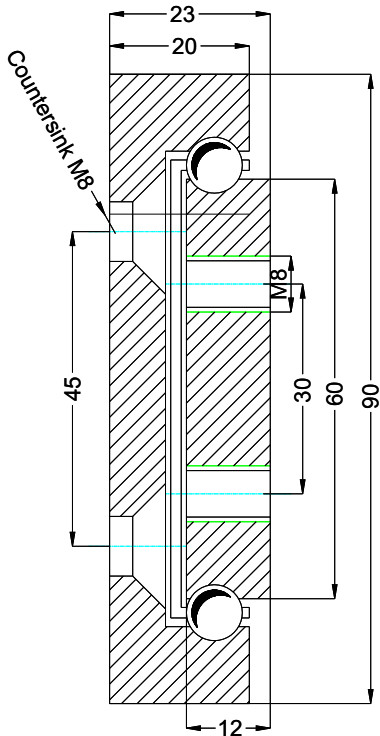
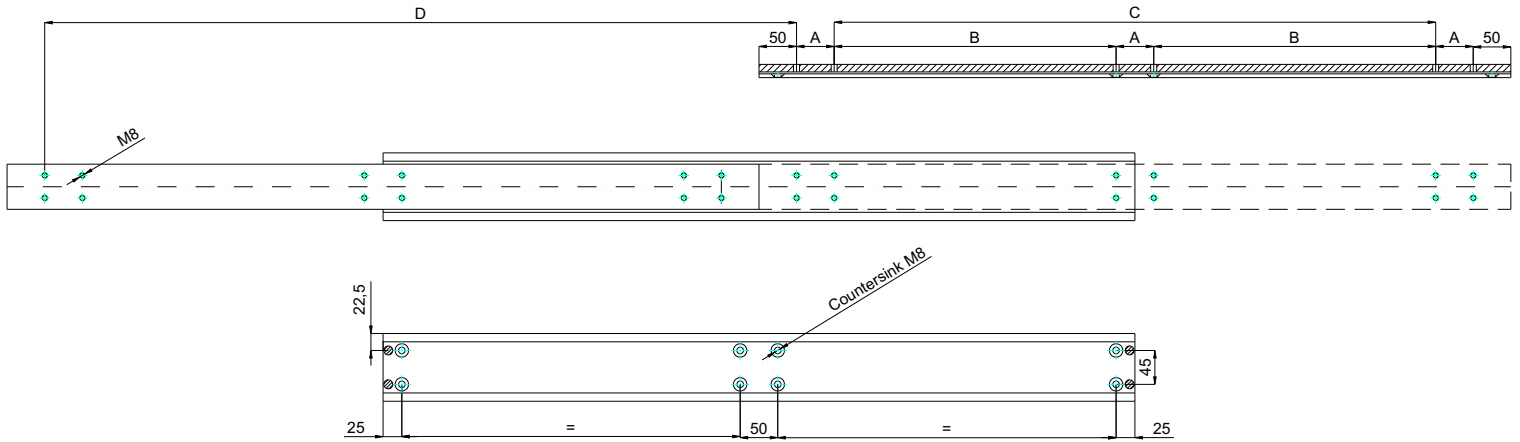
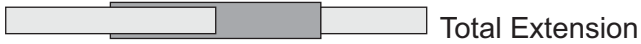
Options:
Various dimensions of the main profile, optional slide lengths, extensions, drillings, diameters and hole centers to customer's requirement.



**WE RECOMMEND USE ON THE MAJOR AXIS
DO NOT DISMANTLE THE SLIDE!!!**

Type: OWST-70				Part No. OWST7021 ...		
Part No.	Installation Length L (mm)	Extension Length D (mm)	* Load per pair (kg)	DRILLING TABLE		
				Dimension A	Dimension B	Dimension C
OWST7021.040	400	400	500	50	---	200
OWST7021.045	450	450	490	50	---	250
OWST7021.050	500	500	480	50	---	300
OWST7021.055	550	550	470	50	---	350
OWST7021.060	600	600	460	50	---	400
OWST7021.065	650	650	450	50	200	---
OWST7021.070	700	700	440	50	225	---
OWST7021.075	750	750	440	50	250	---
OWST7021.080	800	800	420	50	275	---
OWST7021.085	850	850	410	50	300	---
OWST7021.090	900	900	400	50	325	---
OWST7021.095	950	950	390	50	350	---
OWST7021.100	1000	1000	380	50	375	---
OWST7021.105	1050	1050	370	50	400	---
OWST7021.110	1100	1100	360	50	425	---
OWST7021.115	1150	1150	350	50	450	---
OWST7021.120	1200	1200	340	50	475	---
OWST7021.125	1250	1250	330	50	500	---
OWST7021.130	1300	1300	320	50	525	---
OWST7021.135	1350	1350	310	50	550	---
OWST7021.140	1400	1400	300	50	575	---
OWST7021.145	1450	1450	290	50	600	---
OWST7021.150	1500	1500	280	50	625	---
OWST7021.155	1550	1550	270	50	650	---
OWST7021.160	1600	1600	260	50	675	---
OWST7021.165	1650	1650	250	50	700	---
OWST7021.170	1700	1700	240	100	650	---
OWST7021.175	1750	1750	230	100	675	---
OWST7021.180	1800	1800	220	100	700	---
OWST7021.185	1850	1850	210	100	725	---
OWST7021.190	1900	1900	200	100	750	---
OWST7021.195	1950	1950	190	100	775	---
OWST7021.200	2000	2000	180	100	800	---

* The maximum safe load is given for a fully extended pair of slides, mounted on the major axis, with a load spread uniformly along the inner beam



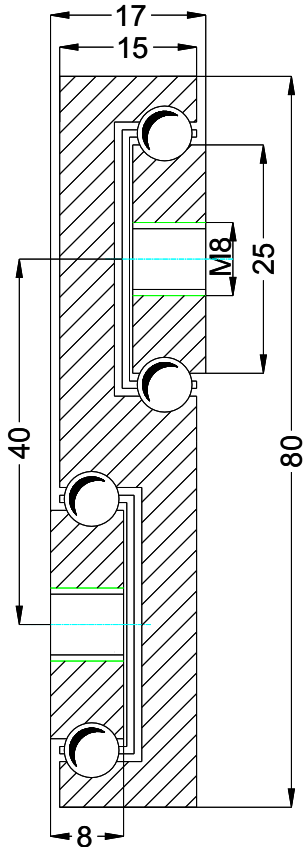
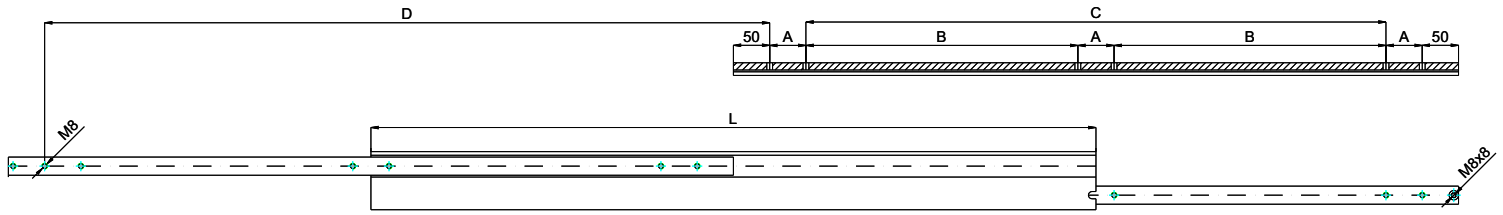
Options:
Various dimensions of the main profile, optional slide lengths, extensions, drillings, diameters and hole centers to customer's requirement.



**WE RECOMMEND USE ON THE MAJOR AXIS
DO NOT DISMANTLE THE SLIDE!!!**

Type: OWST-90				Part No. OWST9023 ...		
Part No.	Installation Length L (mm)	Extension Length D (mm)	* Load per pair (kg)	DRILLING TABLE		
				Dimension A	Dimension B	Dimension C
OWST9023.060	600	600	1000	50	---	400
OWST9023.065	650	650	980	50	200	---
OWST9023.070	700	700	950	50	225	---
OWST9023.075	750	750	920	50	250	---
OWST9023.080	800	800	890	50	275	---
OWST9023.085	850	850	860	50	300	---
OWST9023.090	900	900	830	50	325	---
OWST9023.095	950	950	800	50	350	---
OWST9023.100	1000	1000	770	50	375	---
OWST9023.105	1050	1050	740	50	400	---
OWST9023.110	1100	1100	710	50	425	---
OWST9023.115	1150	1150	680	50	450	---
OWST9023.120	1200	1200	650	50	475	---
OWST9023.125	1250	1250	610	50	500	---
OWST9023.130	1300	1300	580	50	525	---
OWST9023.135	1350	1350	550	50	550	---
OWST9023.140	1400	1400	530	50	575	---
OWST9023.145	1450	1450	510	50	600	---
OWST9023.150	1500	1500	480	50	625	---
OWST9023.155	1550	1550	450	50	650	---
OWST9023.160	1600	1600	420	50	675	---
OWST9023.165	1650	1650	390	50	700	---
OWST9023.170	1700	1700	360	100	650	---
OWST9023.175	1750	1750	330	100	675	---
OWST9023.180	1800	1800	290	100	700	---
OWST9023.185	1850	1850	260	100	725	---
OWST9023.190	1900	1900	230	100	750	---
OWST9023.195	1950	1950	200	100	775	---
OWST9023.200	2000	2000	170	100	800	---

* The maximum safe load is given for a fully extended pair of slides, mounted on the major axis, with a load spread uniformly along the inner beam



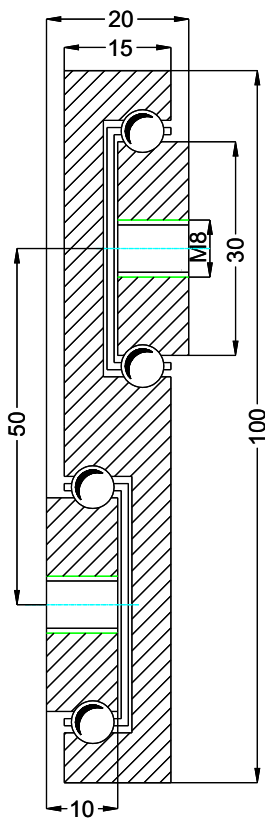
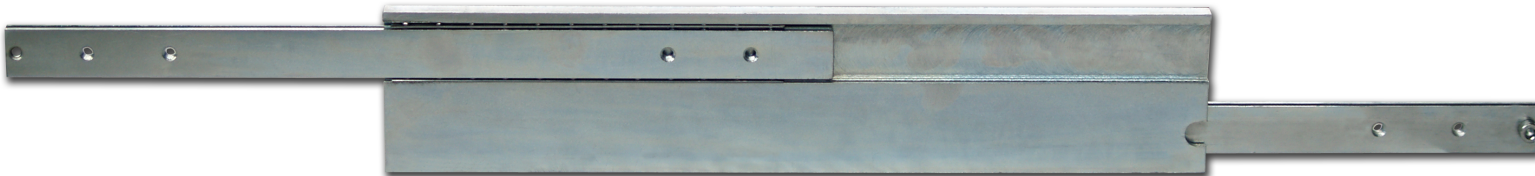
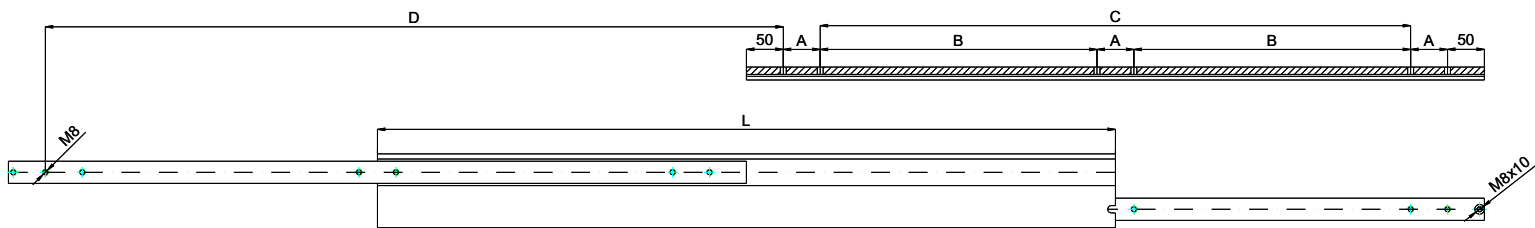
Options:
Various dimensions of the main profile, optional slide lengths, extensions, drillings, diameters and hole centers to customer's requirement.



**WE RECOMMEND USE ON THE MAJOR AXIS
DO NOT DISMANTLE THE SLIDE!!!**

Type: STR-80			Part No. STR8017 ...			
Part No.	Installation Length L (mm)	Extension Length D (mm)	* Load per pair (kg)	DRILLING TABLE		
				Dimension A	Dimension B	Dimension C
STR8017.020	200	200	270	50	---	---
STR8017.025	250	250	265	50	---	50
STR8017.030	300	300	260	50	---	100
STR8017.035	350	350	255	50	---	150
STR8017.040	400	400	250	50	---	200
STR8017.045	450	450	245	50	---	250
STR8017.050	500	500	240	50	---	300
STR8017.055	550	550	230	50	150	---
STR8017.060	600	600	225	50	175	---
STR8017.065	650	650	220	50	200	---
STR8017.070	700	700	215	50	225	---
STR8017.075	750	750	210	50	250	---
STR8017.080	800	800	200	50	275	---
STR8017.085	850	850	190	50	300	---
STR8017.090	900	900	180	50	325	---
STR8017.095	950	950	170	50	350	---
STR8017.100	1000	1000	160	50	375	---
STR8017.105	1050	1050	150	50	400	---
STR8017.110	1100	1100	140	50	425	---
STR8017.115	1150	1150	130	50	450	---
STR8017.120	1200	1200	120	50	475	---

*** The maximum safe load is given for a fully extended pair of slides, mounted on the major axis, with a load spread uniformly along the inner beam**



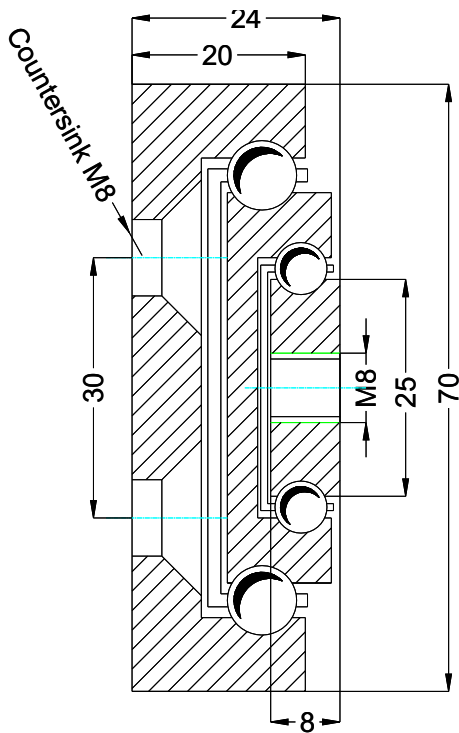
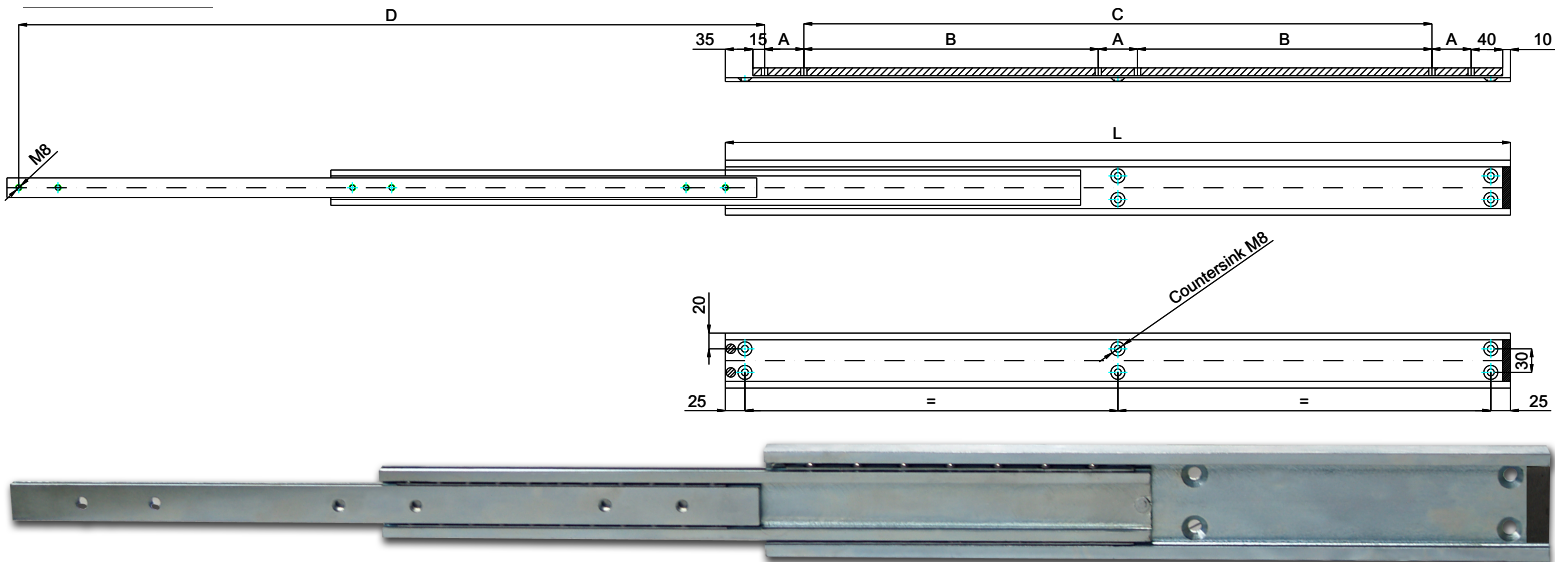
Options:
Various dimensions of the main profile, optional slide lengths, extensions, drillings, diameters and hole centers to customer's requirement.



**WE RECOMMEND USE ON THE MAJOR AXIS
DO NOT DISMANTLE THE SLIDE!!!**

Type: STR-100			Part No. STR10020 ...			
Part No.	Installation Length L (mm)	Extension Length D (mm)	* Load per pair (kg)	DRILLING TABLE		
				Dimension A	Dimension B	Dimension C
STR10020.020	200	200	420	50	---	---
STR10020.025	250	250	410	50	---	50
STR10020.030	300	300	400	50	---	100
STR10020.035	350	350	390	50	---	150
STR10020.040	400	400	380	50	---	200
STR10020.045	450	450	370	50	---	250
STR10020.050	500	500	360	50	---	300
STR10020.055	550	550	350	50	150	---
STR10020.060	600	600	340	50	175	---
STR10020.065	650	650	330	50	200	---
STR10020.070	700	700	320	50	225	---
STR10020.075	750	750	310	50	250	---
STR10020.080	800	800	300	50	275	---
STR10020.085	850	850	290	50	300	---
STR10020.090	900	900	280	50	325	---
STR10020.095	950	950	270	50	350	---
STR10020.100	1000	1000	260	50	375	---
STR10020.105	1050	1050	250	50	400	---
STR10020.110	1100	1100	240	50	425	---
STR10020.115	1150	1150	235	50	450	---
STR10020.120	1200	1200	230	50	475	---
STR10020.125	1250	1250	225	50	500	---
STR10020.130	1300	1300	220	50	525	---
STR10020.135	1350	1350	215	50	550	---
STR10020.140	1400	1400	210	50	575	---
STR10020.145	1450	1450	200	50	600	---
STR10020.150	1500	1500	190	50	625	---
STR10020.155	1550	1550	180	50	650	---
STR10020.160	1600	1600	170	50	675	---

*** The maximum safe load is given for a fully extended pair of slides, mounted on the major axis, with a load spread uniformly along the inner beam**



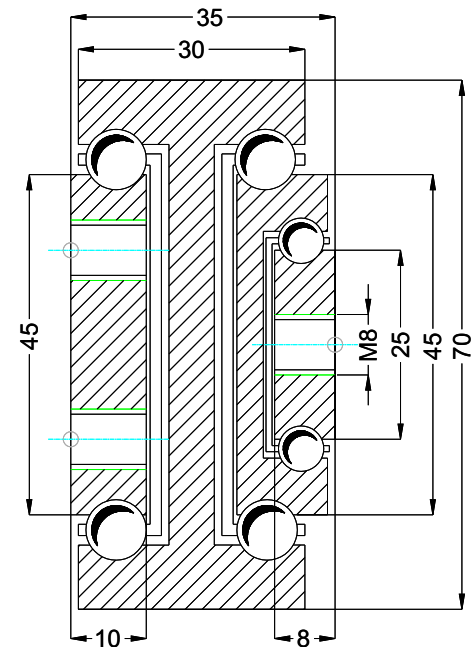
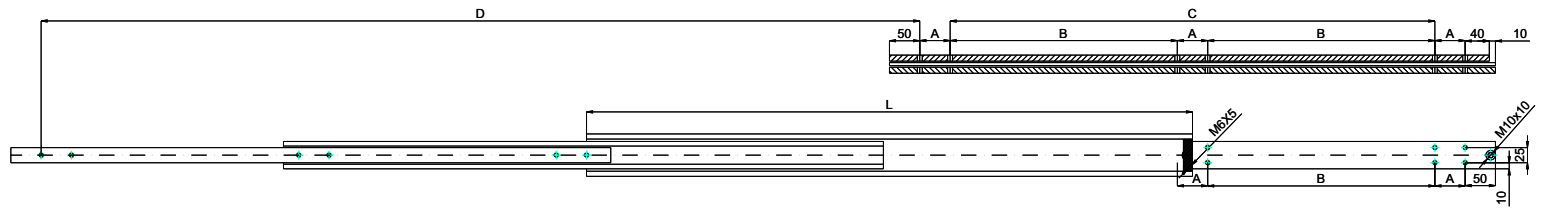
Options:
Various dimensions of the main profile, optional slide lengths, extensions, drillings, diameters and hole centers to customer's requirement.



**WE RECOMMEND USE ON THE MAJOR AXIS
DO NOT DISMANTLE THE SLIDE!!!**

Type: TSR-70			Part No. TSR7024 ...			
Part No.	Installation Length L (mm)	Extension Length D (mm)	* Load per pair (kg)	DRILLING TABLE		
				Dimension A	Dimension B	Dimension C
TSR7024.030	300	250	280	50	---	100
TSR7024.035	350	300	275	50	---	150
TSR7024.040	400	350	270	50	---	200
TSR7024.045	450	400	265	50	---	250
TSR7024.050	500	450	260	50	---	300
TSR7024.055	550	500	255	50	150	---
TSR7024.060	600	550	250	50	175	---
TSR7024.065	650	600	245	50	200	---
TSR7024.070	700	650	240	50	225	---
TSR7024.075	750	700	235	50	250	---
TSR7024.080	800	750	230	50	275	---
TSR7024.085	850	800	225	50	300	---
TSR7024.090	900	850	220	50	325	---
TSR7024.095	950	900	210	50	350	---
TSR7024.100	1000	950	200	50	375	---
TSR7024.105	1050	1000	190	50	400	---
TSR7024.110	1100	1050	180	50	425	---
TSR7024.115	1150	1100	170	50	450	---
TSR7024.120	1200	1150	160	50	475	---

* The maximum safe load is given for a fully extended pair of slides, mounted on the major axis, with a load spread uniformly along the inner beam



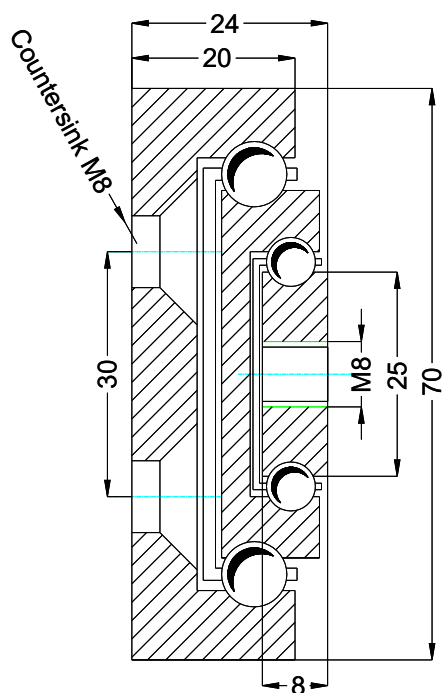
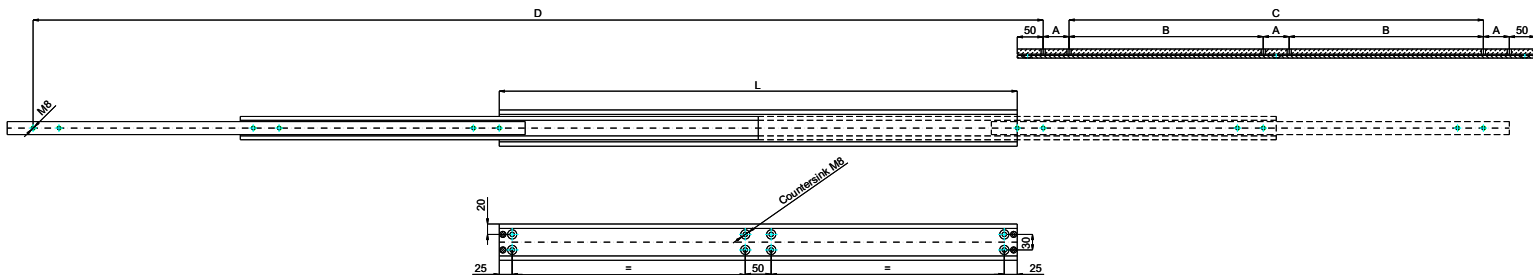
Options:
Various dimensions of the main profile, optional slide lengths, extensions, drillings, diameters and hole centers to customer's requirement.



**WE RECOMMEND USE ON THE MAJOR AXIS
DO NOT DISMANTLE THE SLIDE!!!**

Type: QSRT-70			Part No. QSRT7035 ...			
Part No.	Installation Length L (mm)	Extension Length D (mm)	* Load per pair (kg)	DRILLING TABLE		
				Dimension A	Dimension B	Dimension C
QSRT7035.040	400	600	270	50	---	200
QSRT7035.045	450	675	265	50	---	250
QSRT7035.050	500	750	260	50	---	300
QSRT7035.055	550	825	255	50	150	---
QSRT7035.060	600	900	250	50	175	---
QSRT7035.065	650	975	245	50	200	---
QSRT7035.070	700	1050	240	50	225	---
QSRT7035.075	750	1125	235	50	250	---
QSRT7035.080	800	1200	230	50	275	---
QSRT7035.085	850	1275	225	50	300	---
QSRT7035.090	900	1350	220	50	325	---
QSRT7035.095	950	1425	210	50	350	---
QSRT7035.100	1000	1500	200	50	375	---
QSRT7035.105	1050	1575	190	50	400	---
QSRT7035.110	1100	1650	180	50	425	---
QSRT7035.115	1150	1725	170	50	450	---
QSRT7035.120	1200	1800	160	50	475	---

* The maximum safe load is given for a fully extended pair of slides, mounted on the major axis, with a load spread uniformly along the inner beam



Options:
Various dimensions of the main profile, optional slide lengths, extensions, drillings, diameters and hole centers to customer's requirement.



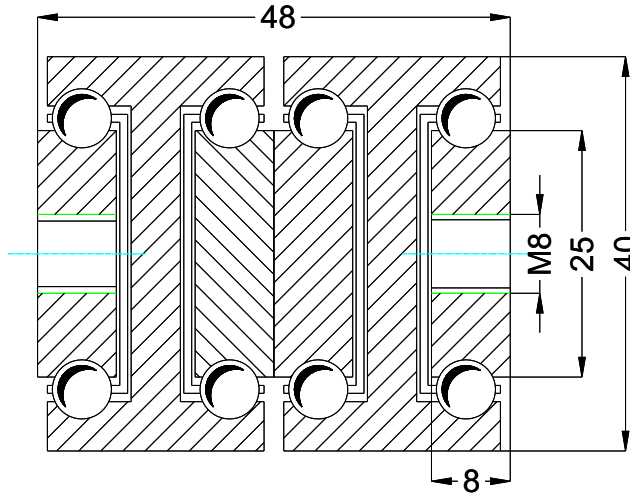
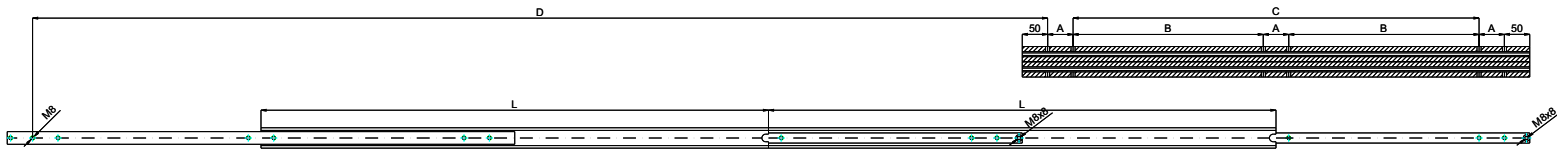
**WE RECOMMEND USE ON THE MAJOR AXIS
DO NOT DISMANTLE THE SLIDE!!!**

Type: TSRT-70			Part No. TSRT7024 ...			
Part No.	Installation Length L (mm)	Extension Length D (mm)	* Load per pair (kg)	DRILLING TABLE		
				Dimension A	Dimension B	Dimension C
TSRT7024.030	300	550	280	50	---	100
TSRT7024.035	350	650	275	50	---	150
TSRT7024.040	400	750	270	50	---	200
TSRT7024.045	450	850	265	50	---	250
TSRT7024.050	500	950	260	50	---	300
TSRT7024.055	550	1050	255	50	150	---
TSRT7024.060	600	1150	250	50	175	---
TSRT7024.065	650	1250	245	50	200	---
TSRT7024.070	700	1350	240	50	225	---
TSRT7024.075	750	1450	235	50	250	---
TSRT7024.080	800	1550	230	50	275	---
TSRT7024.085	850	1650	225	50	300	---
TSRT7024.090	900	1750	220	50	325	---
TSRT7024.095	950	1850	210	50	350	---
TSRT7024.100	1000	1950	200	50	375	---
TSRT7024.105	1050	2050	190	50	400	---
TSRT7024.110	1100	2150	180	50	425	---
TSRT7024.115	1150	2250	170	50	450	---
TSRT7024.120	1200	2350	160	50	475	---

*** The maximum safe load is given for a fully extended pair of slides, mounted on the major axis, with a load spread uniformly along the inner beam**



Over Extension



Options:
Various dimensions of the main profile, optional slide lengths, extensions, drillings, diameters and hole centers to customer's requirement.

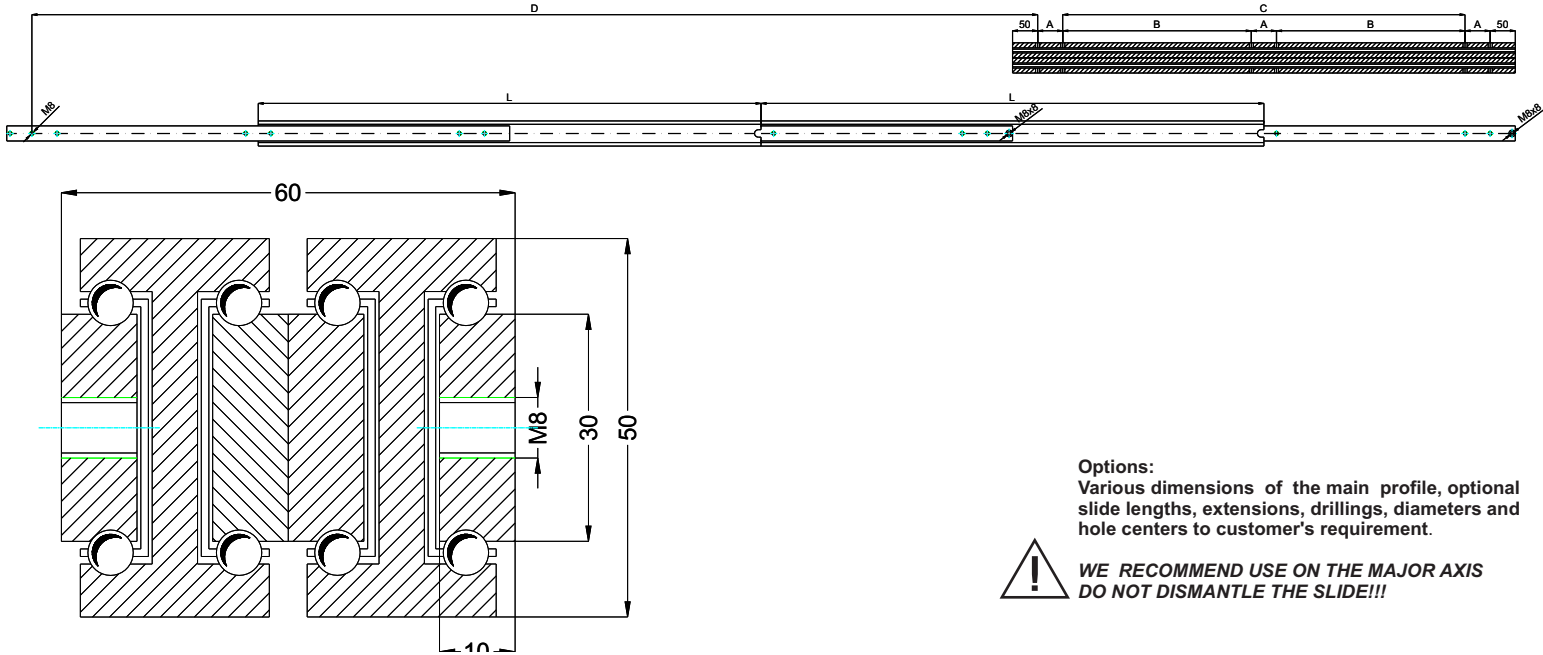


**WE RECOMMEND USE ON THE MAJOR AXIS
DO NOT DISMANTLE THE SLIDE!!!**



Type: DDTS-40			Part No. DDTS4048 ...			
Part No.	Installation Length L (mm)	Extension Length D (mm)	* Load per pair (kg)	DRILLING TABLE		
				Dimension A	Dimension B	Dimension C
DDTS4048.020	200	400	200	50	---	---
DDTS4048.025	250	500	195	50	---	50
DDTS4048.030	300	600	190	50	---	100
DDTS4048.035	350	700	185	50	---	150
DDTS4048.040	400	800	180	50	---	200
DDTS4048.045	450	900	175	50	---	250
DDTS4048.050	500	1000	170	50	---	300
DDTS4048.055	550	1100	165	50	150	---
DDTS4048.060	600	1200	160	50	175	---
DDTS4048.065	650	1300	155	50	200	---
DDTS4048.070	700	1400	150	50	225	---
DDTS4048.075	750	1500	145	50	250	---
DDTS4048.080	800	1600	140	50	275	---
DDTS4048.085	850	1700	135	50	300	---
DDTS4048.090	900	1800	130	50	325	---
DDTS4048.095	950	1900	125	50	350	---
DDTS4048.100	1000	2000	115	50	375	---
DDTS4048.105	1050	2100	105	50	400	---
DDTS4048.110	1100	2200	95	50	425	---
DDTS4048.115	1150	2300	85	50	450	---
DDTS4048.120	1200	2400	80	50	475	---

* The maximum safe load is given for a fully extended pair of slides, mounted on the major axis, with a load spread uniformly along the inner beam



Options:
Various dimensions of the main profile, optional slide lengths, extensions, drillings, diameters and hole centers to customer's requirement.



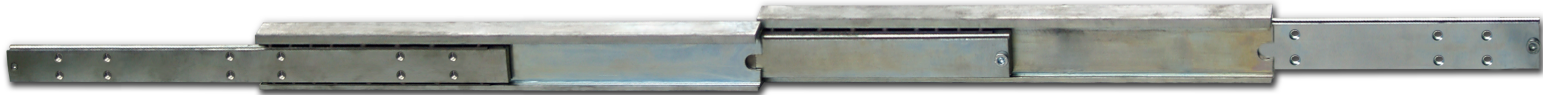
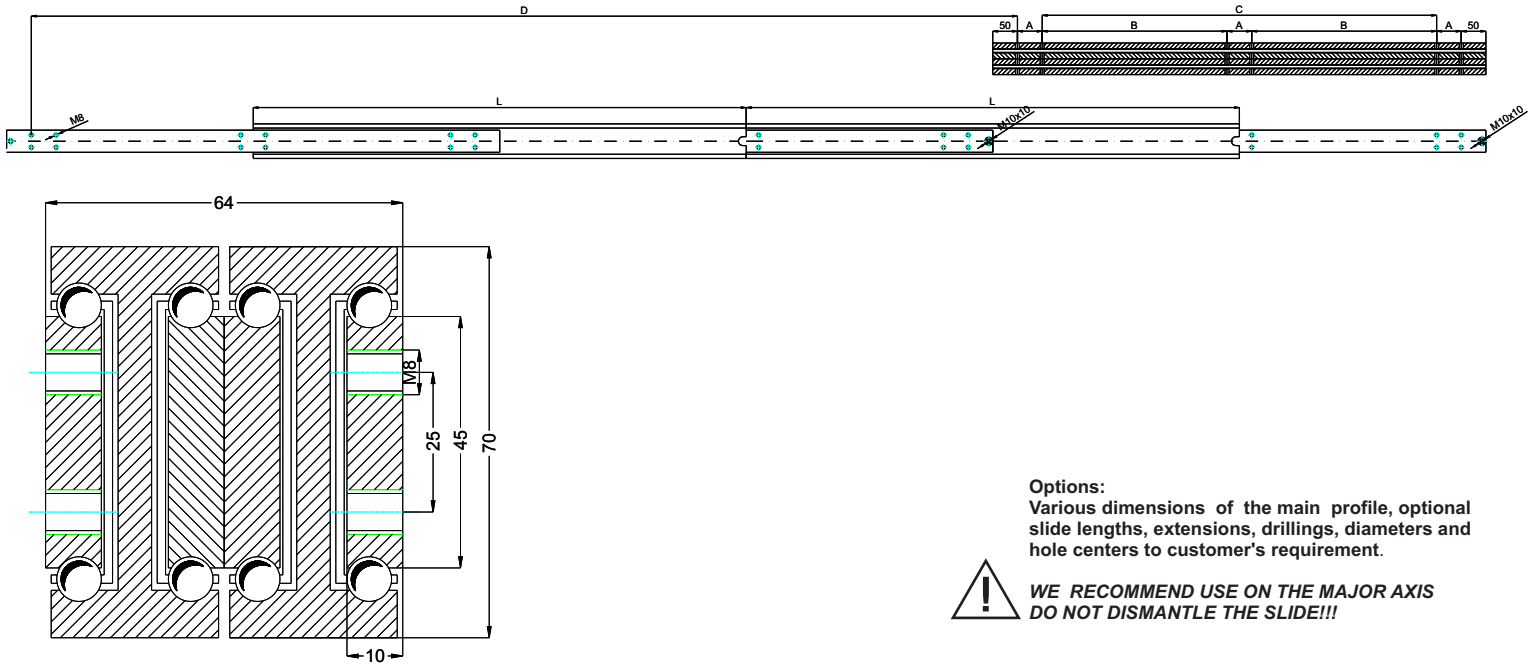
**WE RECOMMEND USE ON THE MAJOR AXIS
DO NOT DISMANTLE THE SLIDE!!!**



Type: DDTS-50			Part No. DDTS5060 ...			
Part No.	Installation Length L (mm)	Extension Length D (mm)	* Load per pair (kg)	DRILLING TABLE		
				Dimension A	Dimension B	Dimension C
DDTS5060.020	200	400	310	50	---	---
DDTS5060.025	250	500	305	50	---	50
DDTS5060.030	300	600	300	50	---	100
DDTS5060.035	350	700	290	50	---	150
DDTS5060.040	400	800	280	50	---	200
DDTS5060.045	450	900	270	50	---	250
DDTS5060.050	500	1000	260	50	---	300
DDTS5060.055	550	1100	250	50	150	---
DDTS5060.060	600	1200	245	50	175	---
DDTS5060.065	650	1300	240	50	200	---
DDTS5060.070	700	1400	230	50	225	---
DDTS5060.075	750	1500	220	50	250	---
DDTS5060.080	800	1600	210	50	275	---
DDTS5060.085	850	1700	200	50	300	---
DDTS5060.090	900	1800	195	50	325	---
DDTS5060.095	950	1900	190	50	350	---
DDTS5060.100	1000	2000	180	50	375	---
DDTS5060.105	1050	2100	170	50	400	---
DDTS5060.110	1100	2200	165	50	425	---
DDTS5060.115	1150	2300	160	50	450	---
DDTS5060.120	1200	2400	155	50	475	---
DDTS5060.125	1250	2550	150	50	500	---
DDTS5060.130	1300	2600	145	50	525	---
DDTS5060.135	1350	2700	140	50	550	---
DDTS5060.140	1400	2800	135	50	575	---
DDTS5060.145	1450	2900	130	50	600	---
DDTS5060.150	1500	3000	125	50	625	---
DDTS5060.155	1550	3100	120	50	650	---
DDTS5060.160	1600	3200	110	50	675	---

* The maximum safe load is given for a fully extended pair of slides, mounted on the major axis, with a load spread uniformly along the inner beam

Over Extension

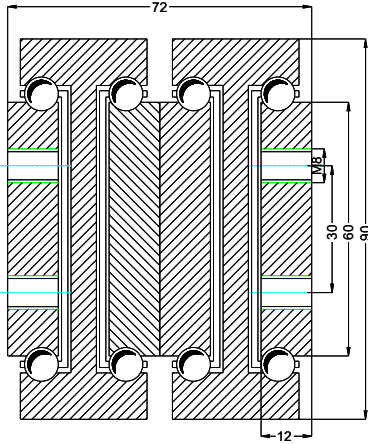
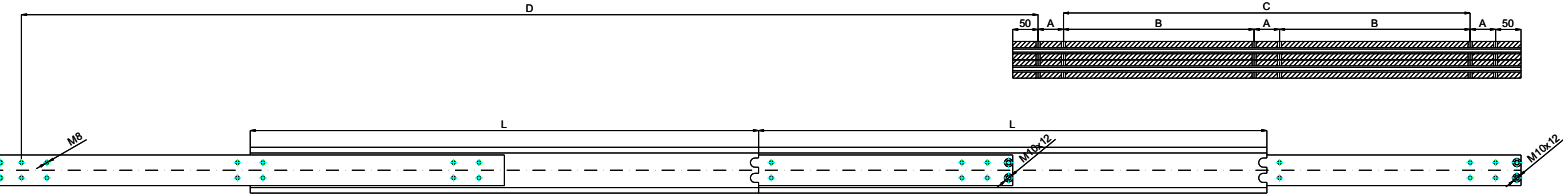


Type: DDTS-70				Part No. DDTS7064 ...		
Part No.	Installation Length L (mm)	Extension Length D (mm)	* Load per pair (kg)	DRILLING TABLE		
				Dimension A	Dimension B	Dimension C
DDTS7064.040	400	800	370	50	---	200
DDTS7064.045	450	900	365	50	---	250
DDTS7064.050	500	1000	360	50	---	300
DDTS7064.055	550	1100	350	50	---	350
DDTS7064.060	600	1200	340	50	---	400
DDTS7064.065	650	1300	330	50	200	---
DDTS7064.070	700	1400	320	50	225	---
DDTS7064.075	750	1500	315	50	250	---
DDTS7064.080	800	1600	310	50	275	---
DDTS7064.085	850	1700	300	50	300	---
DDTS7064.090	900	1800	295	50	325	---
DDTS7064.095	950	1900	285	50	350	---
DDTS7064.100	1000	2000	280	50	375	---
DDTS7064.105	1050	2100	270	50	400	---
DDTS7064.110	1100	2200	260	50	425	---
DDTS7064.115	1150	2300	255	50	450	---
DDTS7064.120	1200	2400	245	50	475	---
DDTS7064.125	1250	2550	240	50	500	---
DDTS7064.130	1300	2600	230	50	525	---
DDTS7064.135	1350	2700	220	50	550	---
DDTS7064.140	1400	2800	210	50	575	---
DDTS7064.145	1450	2900	200	50	600	---
DDTS7064.150	1500	3000	195	50	625	---
DDTS7064.155	1550	3100	190	50	650	---
DDTS7064.160	1600	3200	180	50	675	---
DDTS7064.165	1650	3300	175	50	700	---
DDTS7064.170	1700	3400	165	100	650	---
DDTS7064.175	1750	3500	160	100	675	---
DDTS7064.180	1800	3600	150	100	700	---
DDTS7064.185	1850	3700	140	100	725	---
DDTS7064.190	1900	3800	135	100	750	---
DDTS7064.195	1950	3900	125	100	775	---
DDTS7064.200	2000	4000	120	100	800	---

* The maximum safe load is given for a fully extended pair of slides, mounted on the major axis, with a load spread uniformly along the inner beam



Over Extension



Options:
Various dimensions of the main profile, optional slide lengths, extensions, drillings, diameters and hole centers to customer's requirement.

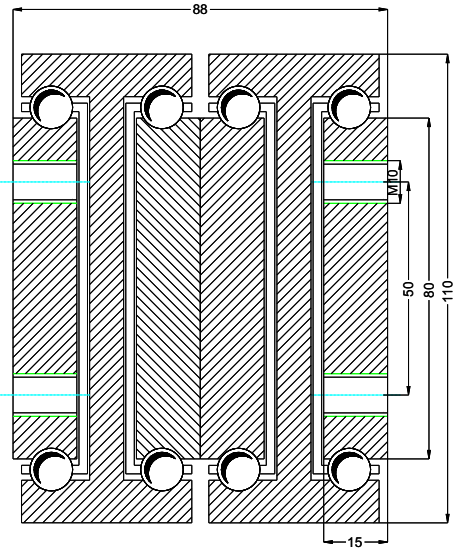
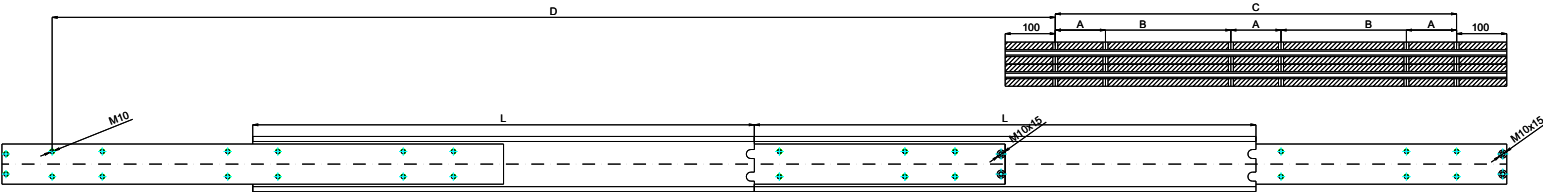


**WE RECOMMEND USE ON THE MAJOR AXIS
DO NOT DISMANTLE THE SLIDE!!!**



Type: DDTS-90				Part No. DDTS9072 ...		
Part No.	Installation Length L (mm)	Extension Length D (mm)	* Load per pair (kg)	DRILLING TABLE		
				Dimension A	Dimension B	Dimension C
DDTS9072.060	600	1200	720	50	--	400
DDTS9072.065	650	1300	680	50	200	--
DDTS9072.070	700	1400	640	50	225	--
DDTS9072.075	750	1500	620	50	250	--
DDTS9072.080	800	1600	600	50	275	--
DDTS9072.085	850	1700	565	50	300	--
DDTS9072.090	900	1800	550	50	325	--
DDTS9072.095	950	1900	540	50	350	--
DDTS9072.100	1000	2000	520	50	375	--
DDTS9072.105	1050	2100	495	50	400	--
DDTS9072.110	1100	2200	470	50	425	--
DDTS9072.115	1150	2300	455	50	450	--
DDTS9072.120	1200	2400	440	50	475	--
DDTS9072.125	1250	2550	415	50	500	--
DDTS9072.130	1300	2600	400	50	525	--
DDTS9072.135	1350	2700	380	50	550	--
DDTS9072.140	1400	2800	360	50	575	--
DDTS9072.145	1450	2900	350	50	600	--
DDTS9072.150	1500	3000	330	50	625	--
DDTS9072.155	1550	3100	310	50	650	--
DDTS9072.160	1600	3200	295	50	675	--
DDTS9072.165	1650	3300	280	50	700	--
DDTS9072.170	1700	3400	270	100	650	--
DDTS9072.175	1750	3500	260	100	675	--
DDTS9072.180	1800	3600	255	100	700	--
DDTS9072.185	1850	3700	240	100	725	--
DDTS9072.190	1900	3800	230	100	750	--
DDTS9072.195	1950	3900	215	100	775	--
DDTS9072.200	2000	4000	200	100	800	--

* The maximum safe load is given for a fully extended pair of slides, mounted on the major axis, with a load spread uniformly along the inner beam



Options:
Various dimensions of the main profile, optional slide lengths, extensions, drillings, diameters and hole centers to customer's requirement.



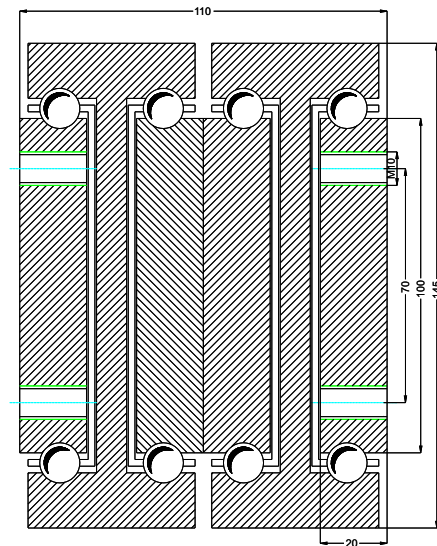
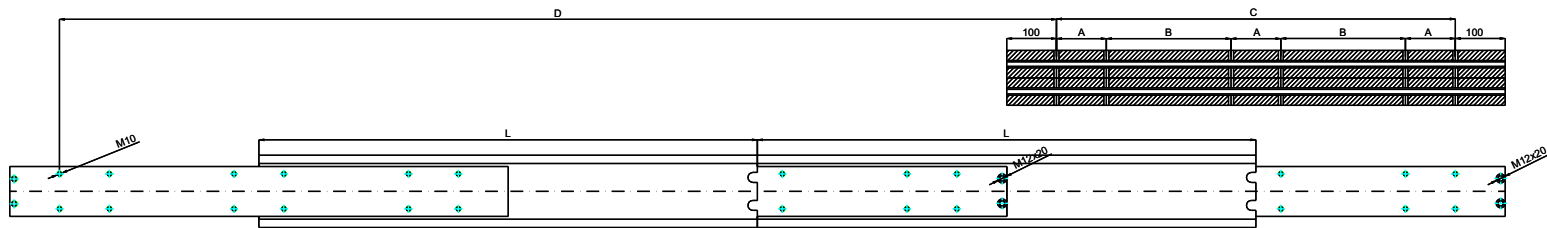
**WE RECOMMEND USE ON THE MAJOR AXIS
DO NOT DISMANTLE THE SLIDE!!!**



Type: DDTS-110				Part No. DDTS11088 ...		
Part No.	Installation Length L (mm)	Extension Length D (mm)	* Load per pair (kg)	DRILLING TABLE		
				Dimension A	Dimension B	Dimension C
DDTS11088.080	800	1600	960	100	150	---
DDTS11088.085	850	1700	920	100	175	---
DDTS11088.090	900	1800	880	100	200	---
DDTS11088.095	950	1900	840	100	225	---
DDTS11088.100	1000	2000	800	100	250	---
DDTS11088.105	1050	2100	760	100	275	---
DDTS11088.110	1100	2200	700	100	300	---
DDTS11088.115	1150	2300	680	100	325	---
DDTS11088.120	1200	2400	620	100	350	---
DDTS11088.125	1250	2550	600	100	375	---
DDTS11088.130	1300	2600	570	100	400	---
DDTS11088.135	1350	2700	560	100	425	---
DDTS11088.140	1400	2800	540	100	450	---
DDTS11088.145	1450	2900	520	100	475	---
DDTS11088.150	1500	3000	495	100	500	---
DDTS11088.155	1550	3100	480	100	525	---
DDTS11088.160	1600	3200	460	100	550	---
DDTS11088.165	1650	3300	440	100	575	---
DDTS11088.170	1700	3400	410	100	600	---
DDTS11088.175	1750	3500	400	100	625	---
DDTS11088.180	1800	3600	385	100	650	---
DDTS11088.185	1850	3700	360	100	675	---
DDTS11088.190	1900	3800	330	100	700	---
DDTS11088.195	1950	3900	320	100	725	---
DDTS11088.200	2000	4000	300	100	750	---

*** The maximum safe load is given for a fully extended pair of slides, mounted on the major axis, with a load spread uniformly along the inner beam**

Over Extension

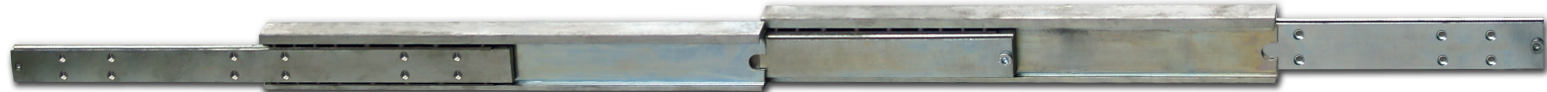


Options:

Various dimensions of the main profile, optional slide lengths, extensions, drillings, diameters and hole centers to customer's requirement.



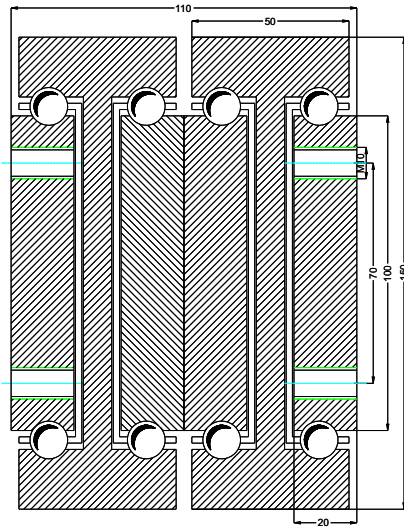
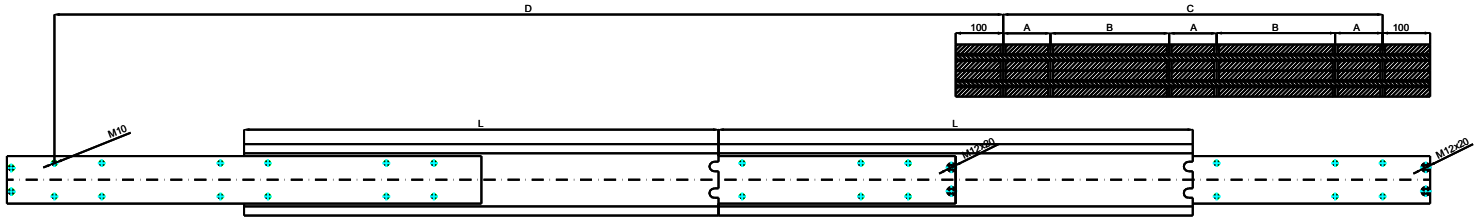
**WE RECOMMEND USE ON THE MAJOR AXIS
DO NOT DISMANTLE THE SLIDE!!!**



Type: DDTS-145				Part No. DDTS145110 ...		
Part No.	Installation Length L (mm)	Extension Length D (mm)	* Load per pair (kg)	DRILLING TABLE		
				Dimension A	Dimension B	Dimension C
DDTS145110.080	800	1600	1120	100	150	---
DDTS145110.085	850	1700	1080	100	175	---
DDTS145110.090	900	1800	1040	100	200	---
DDTS145110.095	950	1900	1000	100	225	---
DDTS145110.100	1000	2000	960	100	250	---
DDTS145110.105	1050	2100	940	100	275	---
DDTS145110.110	1100	2200	920	100	300	---
DDTS145110.115	1150	2300	890	100	325	---
DDTS145110.120	1200	2400	880	100	350	---
DDTS145110.125	1250	2550	860	100	375	---
DDTS145110.130	1300	2600	840	100	400	---
DDTS145110.135	1350	2700	810	100	425	---
DDTS145110.140	1400	2800	800	100	450	---
DDTS145110.145	1450	2900	780	100	475	---
DDTS145110.150	1500	3000	760	100	500	---
DDTS145110.155	1550	3100	730	100	525	---
DDTS145110.160	1600	3200	720	100	550	---
DDTS145110.165	1650	3300	700	100	575	---
DDTS145110.170	1700	3400	680	100	600	---
DDTS145110.175	1750	3500	650	100	625	---
DDTS145110.180	1800	3600	640	100	650	---
DDTS145110.185	1850	3700	620	100	675	---
DDTS145110.190	1900	3800	600	100	700	---
DDTS145110.195	1950	3900	570	100	725	---
DDTS145110.200	2000	4000	560	100	750	---
DDTS145110.205	2050	4100	530	100	775	---
DDTS145110.210	2100	4200	520	100	800	---
DDTS145110.215	2150	4300	500	100	825	---
DDTS145110.220	2200	4400	480	100	850	---
DDTS145110.225	2250	4500	440	100	875	---
DDTS145110.230	2300	4600	400	100	900	---
DDTS145110.235	2350	4700	360	100	925	---
DDTS145110.240	2400	4800	320	100	950	---
DDTS145110.245	2450	4900	280	100	975	---
DDTS145110.250	2500	5000	240	100	1000	---

* The maximum safe load is given for a fully extended pair of slides, mounted on the major axis, with a load spread uniformly along the inner beam

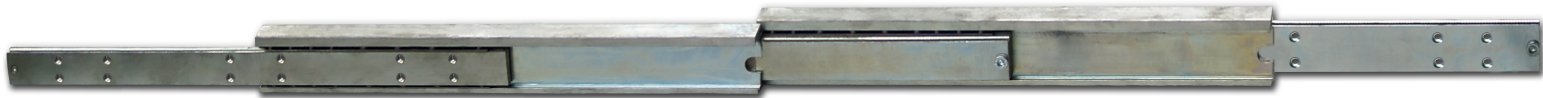
Over Extension



Options:
Various dimensions of the main profile, optional slide lengths, extensions, drillings, diameters and hole centers to customer's requirement.

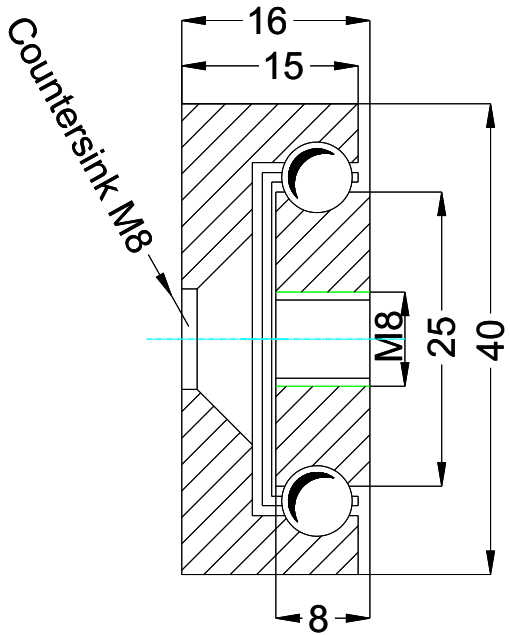
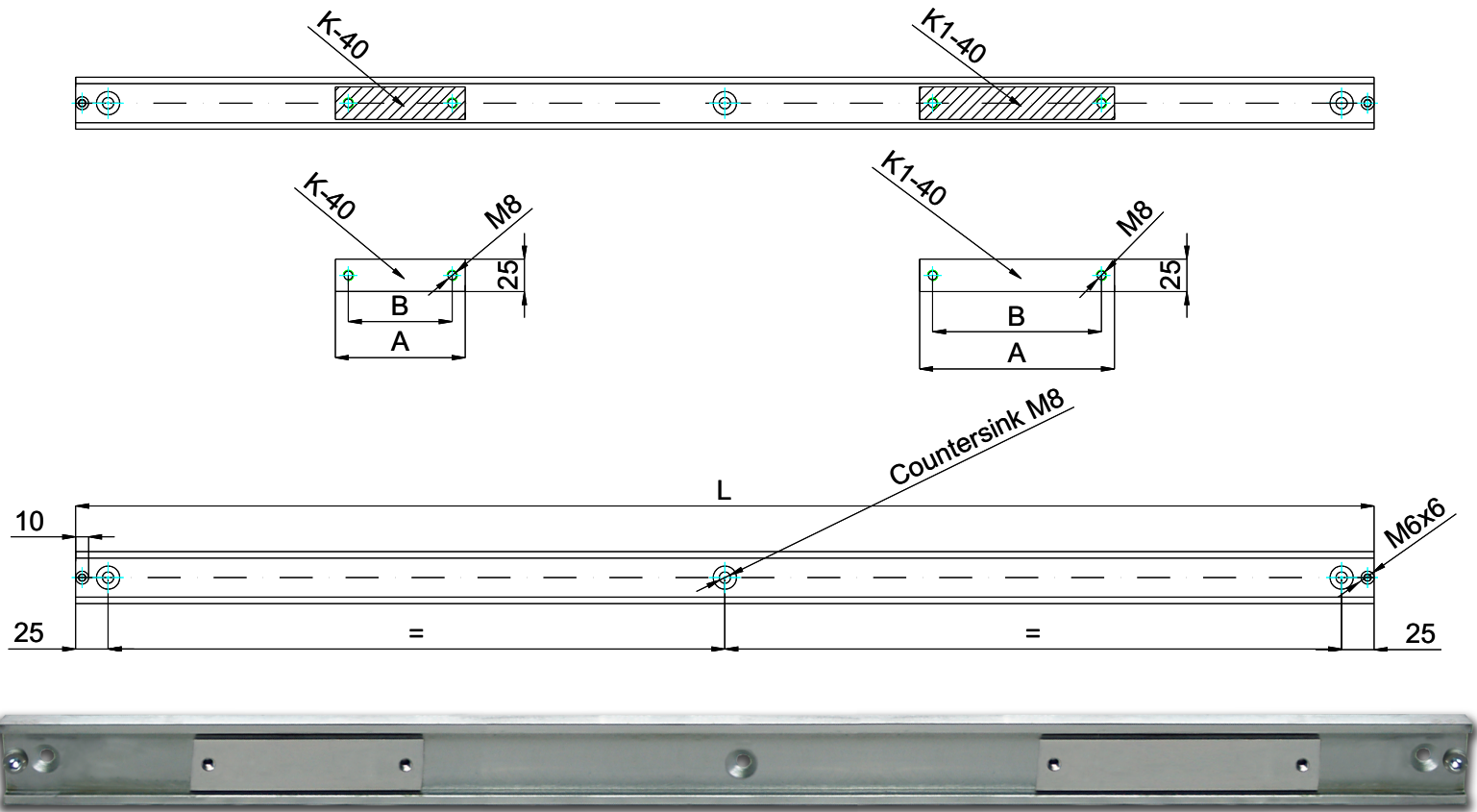


**WE RECOMMEND USE ON THE MAJOR AXIS
DO NOT DISMANTLE THE SLIDE!!!**



Type: DDTS-150				Part No. DDTS150110 ...		
Part No.	Installation Length L (mm)	Extension Length D (mm)	* Load per pair (kg)	DRILLING TABLE		
				Dimension A	Dimension B	Dimension C
DDTS150110.080	800	1600	1150	100	150	---
DDTS150110.085	850	1700	1100	100	175	---
DDTS150110.090	900	1800	1070	100	200	---
DDTS150110.095	950	1900	1030	100	225	---
DDTS150110.100	1000	2000	990	100	250	---
DDTS150110.105	1050	2100	970	100	275	---
DDTS150110.110	1100	2200	950	100	300	---
DDTS150110.115	1150	2300	920	100	325	---
DDTS150110.120	1200	2400	900	100	350	---
DDTS150110.125	1250	2550	890	100	375	---
DDTS150110.130	1300	2600	870	100	400	---
DDTS150110.135	1350	2700	840	100	425	---
DDTS150110.140	1400	2800	810	100	450	---
DDTS150110.145	1450	2900	800	100	475	---
DDTS150110.150	1500	3000	780	100	500	---
DDTS150110.155	1550	3100	760	100	525	---
DDTS150110.160	1600	3200	750	100	550	---
DDTS150110.165	1650	3300	730	100	575	---
DDTS150110.170	1700	3400	700	100	600	---
DDTS150110.175	1750	3500	680	100	625	---
DDTS150110.180	1800	3600	670	100	650	---
DDTS150110.185	1850	3700	650	100	675	---
DDTS150110.190	1900	3800	630	100	700	---
DDTS150110.195	1950	3900	600	100	725	---
DDTS150110.200	2000	4000	590	100	750	---
DDTS150110.205	2050	4100	560	100	775	---
DDTS150110.210	2100	4200	550	100	800	---
DDTS150110.215	2150	4300	530	100	825	---
DDTS150110.220	2200	4400	510	100	850	---
DDTS150110.225	2250	4500	470	100	875	---
DDTS150110.230	2300	4600	430	100	900	---
DDTS150110.235	2350	4700	390	100	925	---
DTDS150110.240	2400	4800	350	100	950	---
DDTS150110.245	2450	4900	310	100	975	---
DDTS150110.250	2500	5000	270	100	1000	---

* The maximum safe load is given for a fully extended pair of slides, mounted on the major axis, with a load spread uniformly along the inner beam



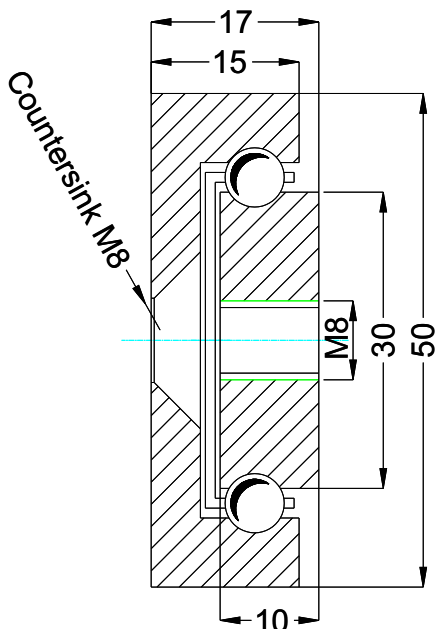
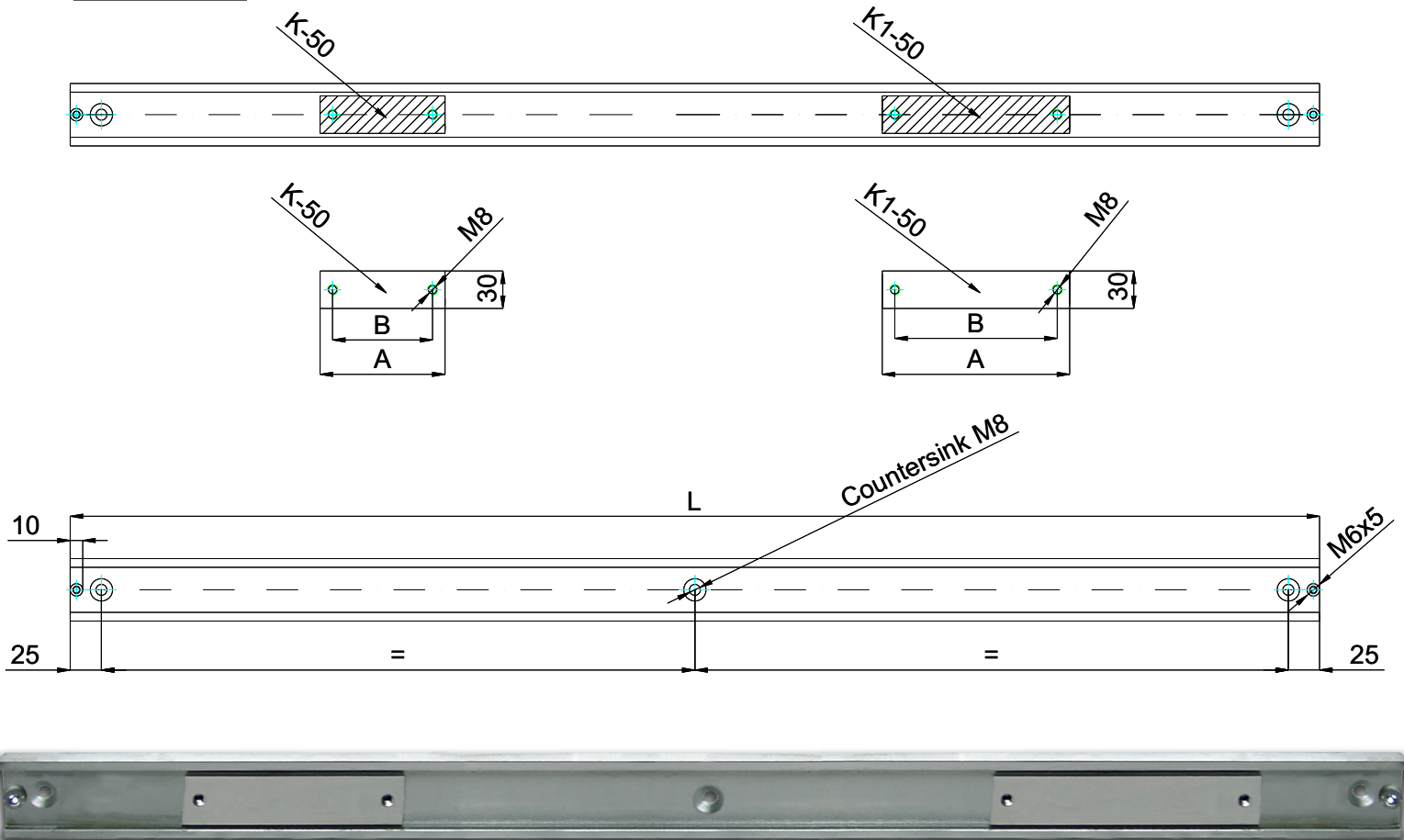
Options:
Various dimensions of the main profile, optional slide lengths, extensions, drillings, diameters and hole centers to customer's requirement.



**WE RECOMMEND USE ON THE MAJOR AXIS
DO NOT DISMANTLE THE SLIDE!!!**

Type: LRD-40		Part No. LRD4016 ...					
Part No.	Installation Length L (mm)	CARRIER K-40			CARRIER K1-40		
		Dimension A	Dimension B	* Load per pair (kg)	Dimension A	Dimension B	* Load per pair (kg)
LRS4016.050	500	100	80	220	150	130	270
LRS4016....	...			220			270
LRS4016.300	3000			220			270

* The maximum safe load is given for a fully extended pair of slides, mounted on the major axis, with a load spread uniformly along the inner beam



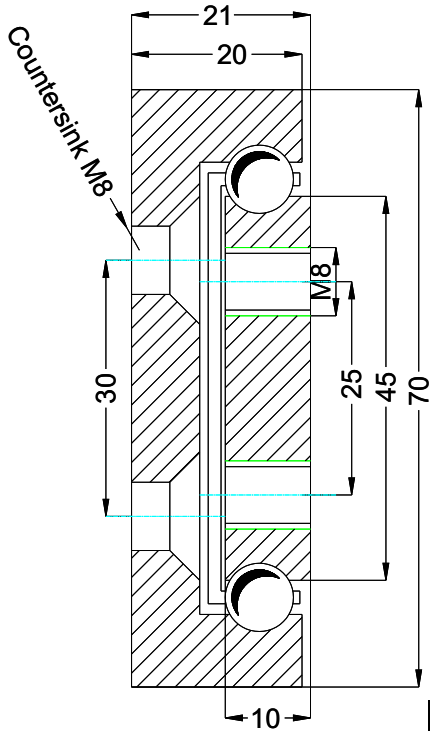
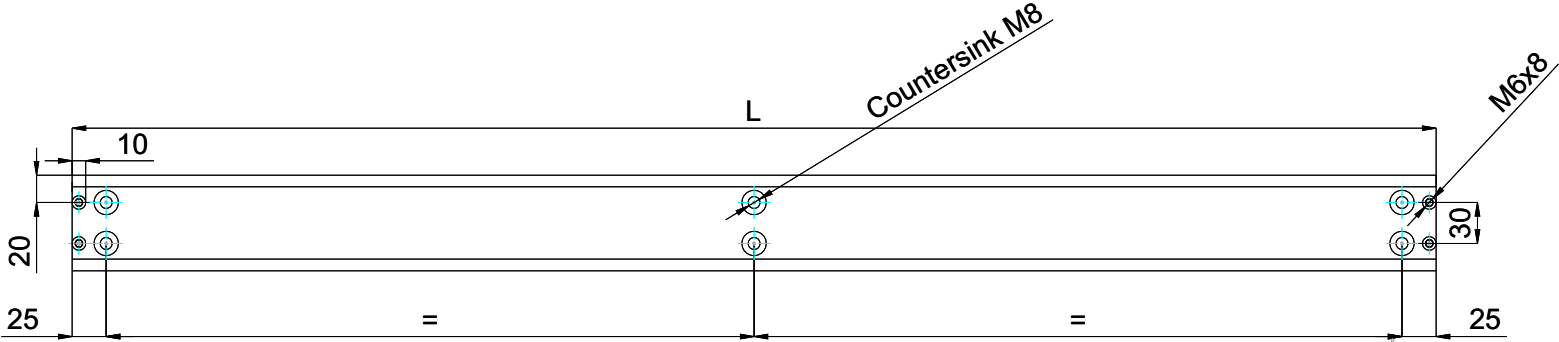
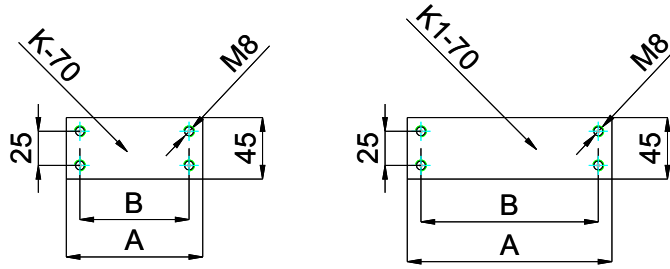
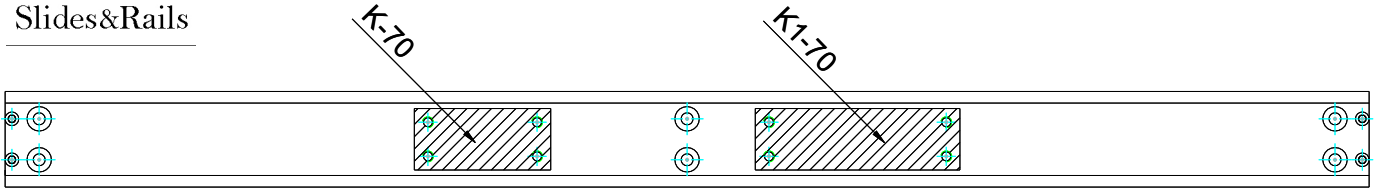
Options:
Various dimensions of the main profile, optional slide lengths, extensions, drillings, diameters and hole centers to customer's requirement.



**WE RECOMMEND USE ON THE MAJOR AXIS
DO NOT DISMANTLE THE SLIDE!!!**

Type: LRD-50		Part No. LRD5017 ...					
Part No.	Installation Length L (mm)	CARRIER K-50			CARRIER K1-50		
		Dimension A	Dimension B	* Load per pair (kg)	Dimension A	Dimension B	* Load per pair (kg)
LRS5017.050	500	100	80	300	150	130	400
LRS5017....	...			300			400
LRS5017.300	3000			300			400

*** The maximum safe load is given for a fully extended pair of slides, mounted on the major axis, with a load spread uniformly along the inner beam**



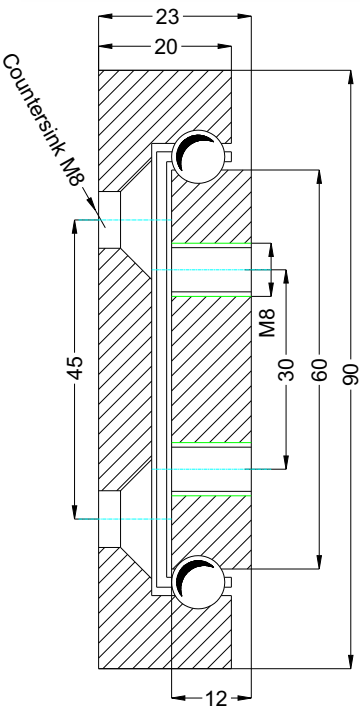
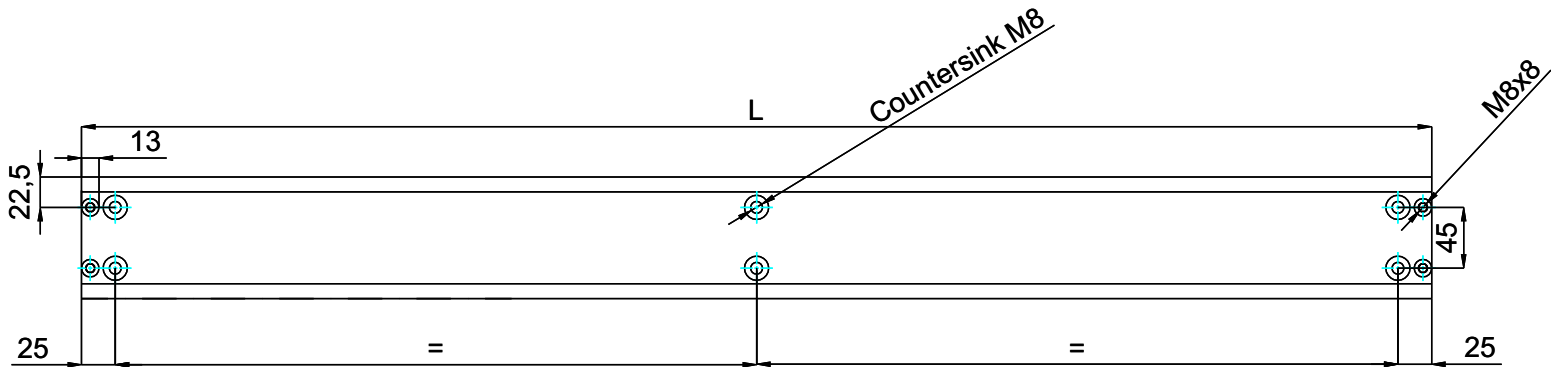
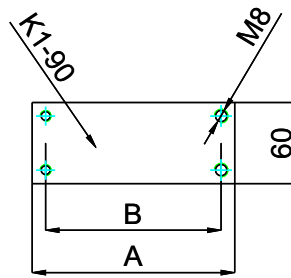
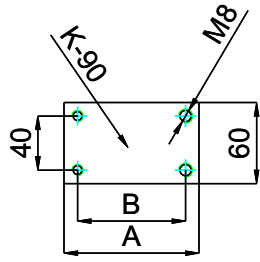
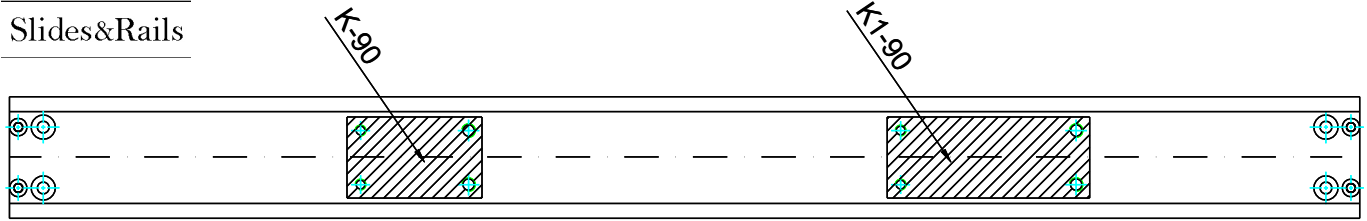
Options:
Various dimensions of the main profile, optional slide lengths, extensions, drillings, diameters and hole centers to customer's requirement.



**WE RECOMMEND USE ON THE MAJOR AXIS
DO NOT DISMANTLE THE SLIDE!!!**

Type: LRD-70		Part No. LRD7021 ...					
Part No.	Installation Length L (mm)	CARRIER K-70			CARRIER K1-70		
		Dimension A	Dimension B	* Load per pair (kg)	Dimension A	Dimension B	* Load per pair (kg)
LRS7021.050	500	100	80	400	150	130	500
LRS7021....	...			400			500
LRS7021.300	3000			400			500

*** The maximum safe load is given for a fully extended pair of slides, mounted on the major axis, with a load spread uniformly along the inner beam**



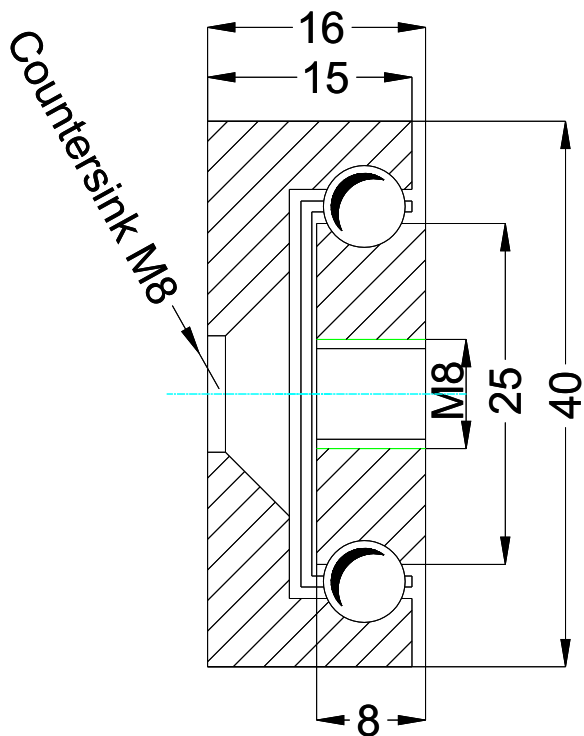
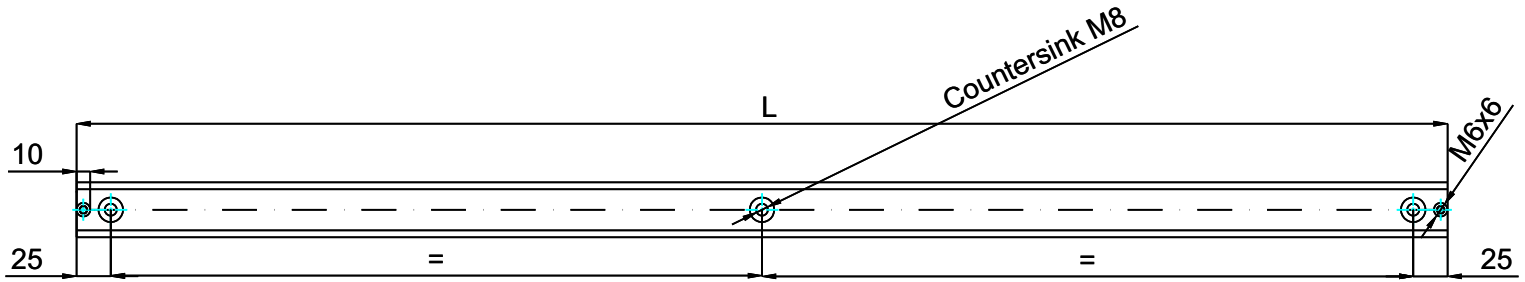
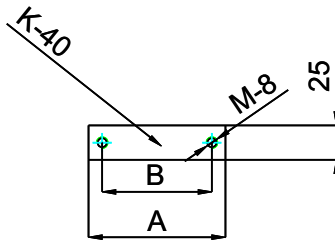
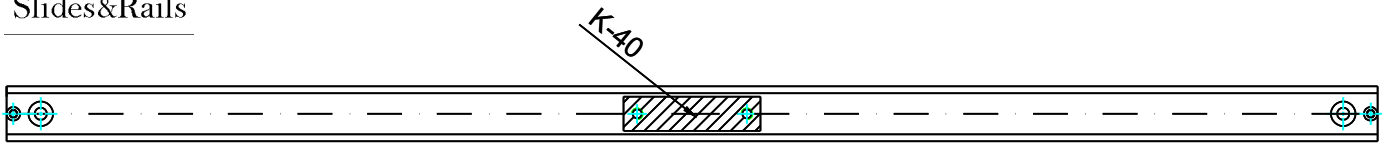
Options:
Various dimensions of the main profile, optional slide lengths, extensions, drillings, diameters and hole centers to customer's requirement.



**WE RECOMMEND USE ON THE MAJOR AXIS
DO NOT DISMANTLE THE SLIDE!!!**

Type: LRD-90		Part No. LRD9023 ...					
Part No.	Installation Length L (mm)	CARRIER K-90			CARRIER K1-90		
		Dimension A	Dimension B	* Load per pair (kg)	Dimension A	Dimension B	* Load per pair (kg)
LRS9023.050	500	100	80	600	150	130	700
LRS9023....	...			600			700
LRS9023.300	3000			600			700

*** The maximum safe load is given for a fully extended pair of slides, mounted on the major axis, with a load spread uniformly along the inner beam**



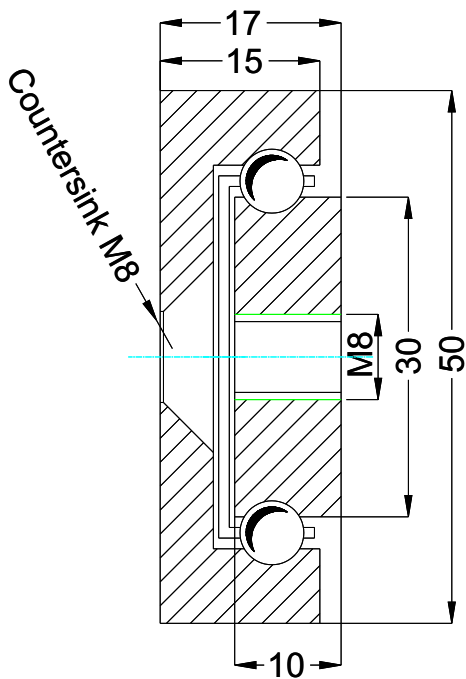
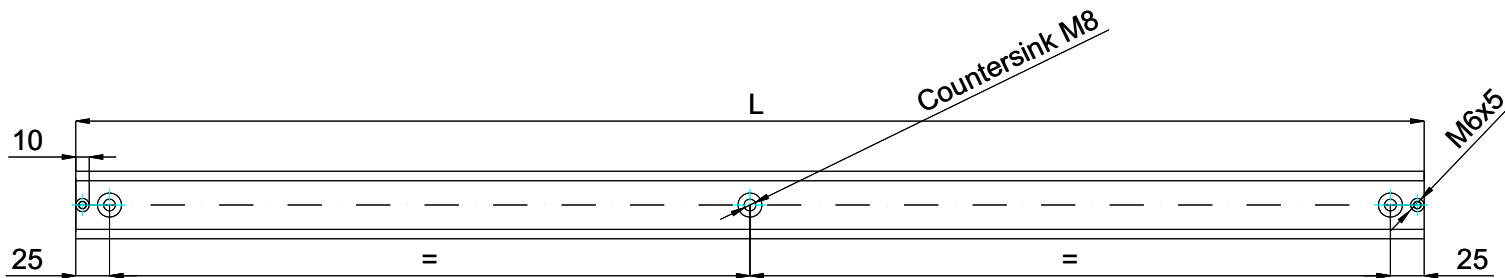
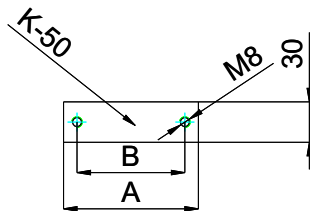
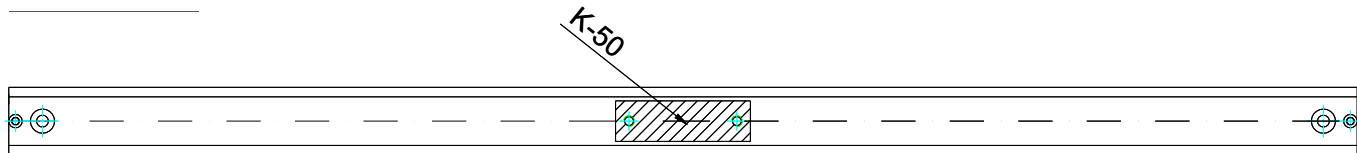
Options:
Various dimensions of the main profile, optional slide lengths, extensions, drillings, diameters and hole centers to customer's requirement.



WE RECOMMEND USE ON THE MAJOR AXIS
DO NOT DISMANTLE THE SLIDE!!!

Type: LRS-40			Part No. LRS4016 ...	
Part No.	Installation Length L (mm)	* Load per pair (kg)	CARRIER K-40	
			Dimension A	Dimension B
LRS4016.050	500	220	100	80
LRS4016....	...	220		
LRS4016.300	3000	220		

* The maximum safe load is given for a fully extended pair of slides, mounted on the major axis, with a load spread uniformly along the inner beam



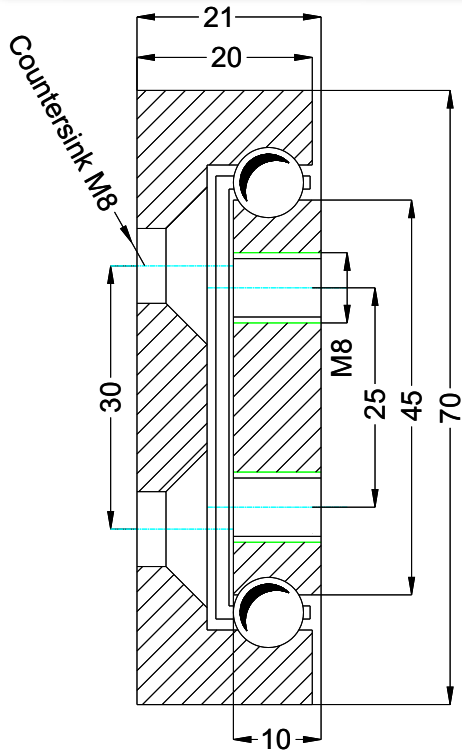
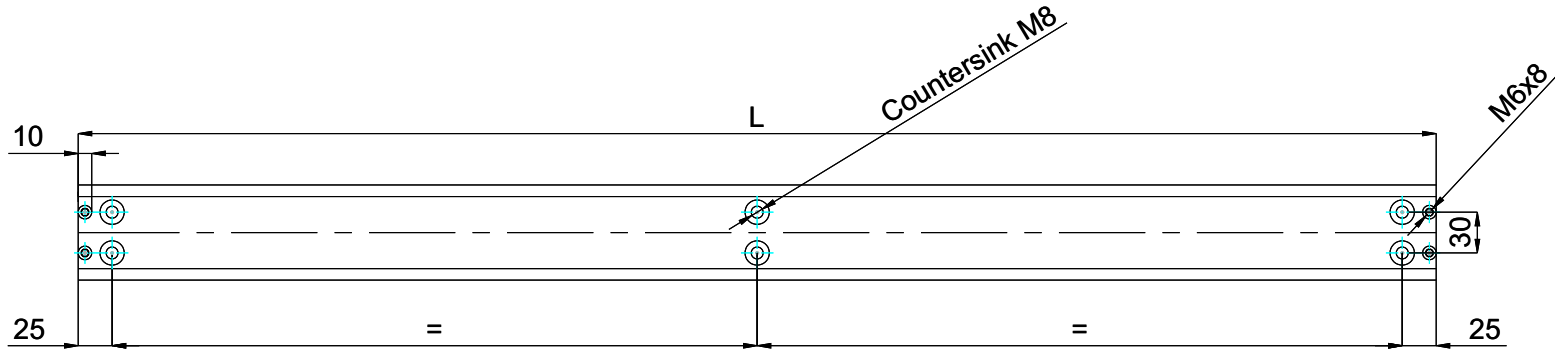
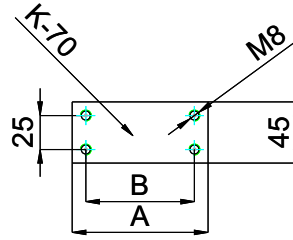
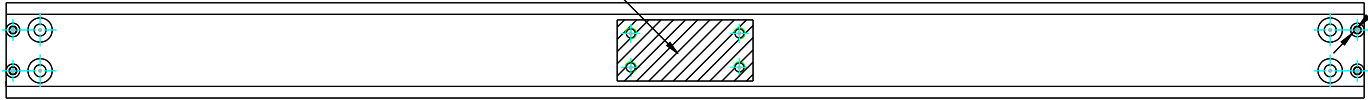
Options:
Various dimensions of the main profile, optional slide lengths, extensions, drillings, diameters and hole centers to customer's requirement.



**WE RECOMMEND USE ON THE MAJOR AXIS
DO NOT DISMANTLE THE SLIDE!!!**

Type: LRS-50			Part No. LRS5017 ...	
Part No.	Installation Length L (mm)	* Load per pair (kg)	CARRIER K-50	
			Dimension A	Dimension B
LRS5017.050	500	300	100	80
LRS5017....	...	300		
LRS5017.300	3000	300		

*** The maximum safe load is given for a fully extended pair of slides, mounted on the major axis, with a load spread uniformly along the inner beam**



Options:
Various dimensions of the main profile, optional slide lengths, extensions, drillings, diameters and hole centers to customer's requirement.

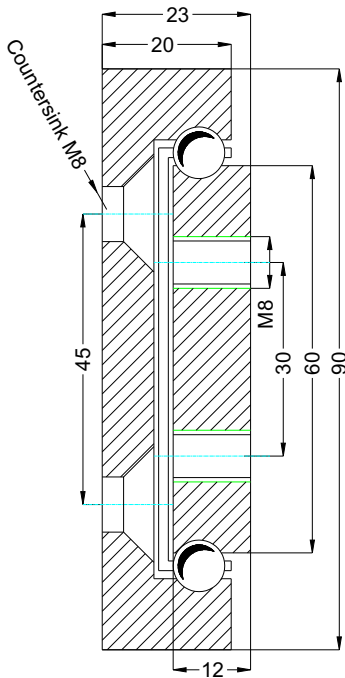
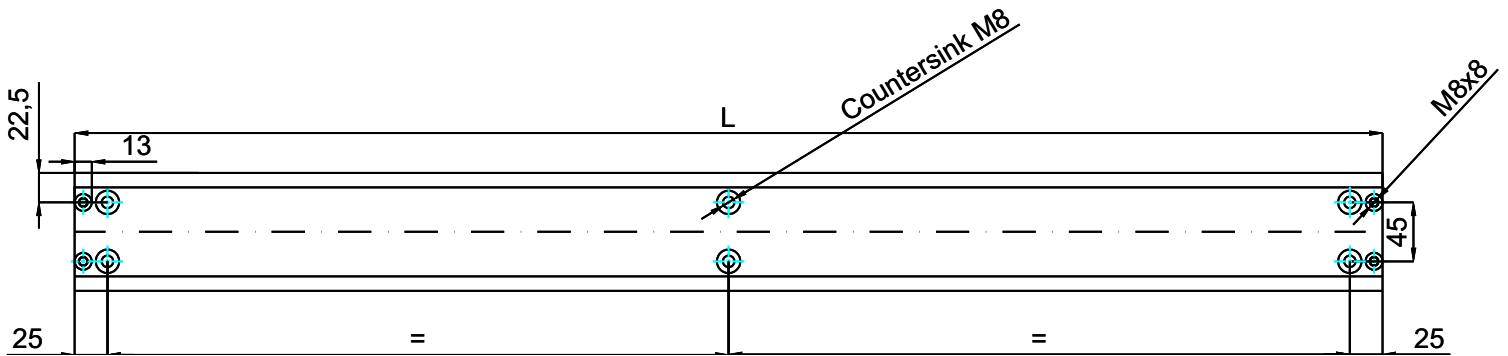
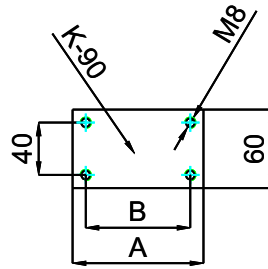
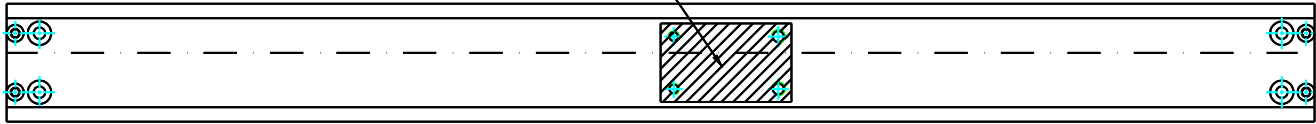


**WE RECOMMEND USE ON THE MAJOR AXIS
DO NOT DISMANTLE THE SLIDE!!!**

Type: LRS-70			Part No. LRS7021 ...	
Part No.	Installation Length L (mm)	* Load per pair (kg)	CARRIER K-70	
			Dimension A	Dimension B
LRS7021.050	500	400	100	80
LRS7021....	...	400		
LRS7021.300	3000	400		

* The maximum safe load is given for a fully extended pair of slides, mounted on the major axis, with a load spread uniformly along the inner beam

TELESCOPIC SLIDE



Options:
Various dimensions of the main profile, optional slide lengths, extensions, drillings, diameters and hole centers to customer's requirement.



**WE RECOMMEND USE ON THE MAJOR AXIS
DO NOT DISMANTLE THE SLIDE!!!**

Type: LRS-90			Part No. LRS9023 ...	
Part No.	Installation Length L (mm)	* Load per pair (kg)	CARRIER K-90	
			Dimension A	Dimension B
LRS9023.050	500	600	100	80
LRS9023....	...	600		
LRS9023.300	3000	600		

*** The maximum safe load is given for a fully extended pair of slides, mounted on the major axis, with a load spread uniformly along the inner beam**