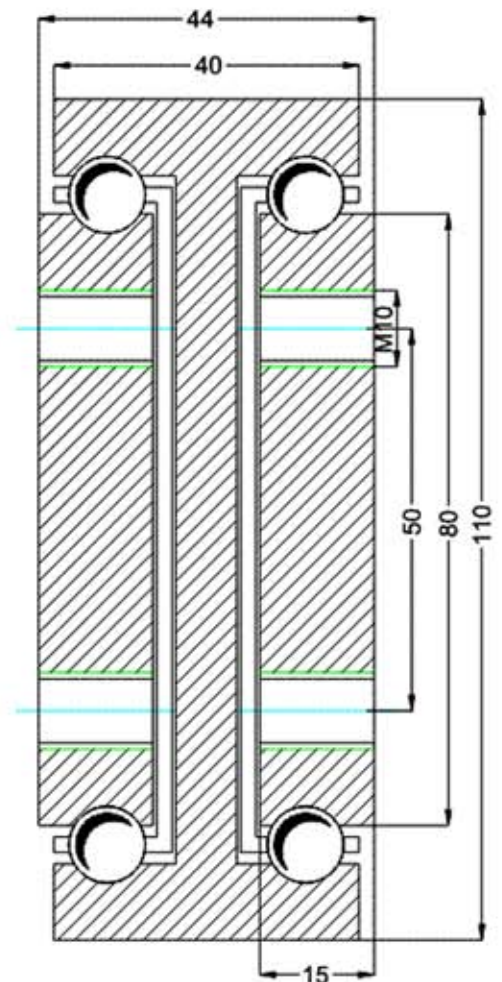




Type: DTS-110				Part No. DTS11044 ...		
Part No.	Installation Length L (mm)	Extension Length D (mm)	* Load per pair (kg)	DRILLING TABLE		
				Dimension A	Dimension B	Dimension C
DTS11044.080	800	800	1200	100	150	---
DTS11044.085	850	850	1150	100	175	---
DTS11044.090	900	900	1100	100	200	---
DTS11044.095	950	950	1050	100	225	---
DTS11044.100	1000	1000	1000	100	250	---
DTS11044.105	1050	1050	950	100	275	---
DTS11044.110	1100	1100	870	100	300	---
DTS11044.115	1150	1150	850	100	325	---
DTS11044.120	1200	1200	780	100	350	---
DTS11044.125	1250	1250	750	100	375	---
DTS11044.130	1300	1300	720	100	400	---
DTS11044.135	1350	1350	700	100	425	---
DTS11044.140	1400	1400	680	100	450	---
DTS11044.145	1450	1450	650	100	475	---
DTS11044.150	1500	1500	620	100	500	---
DTS11044.155	1550	1550	600	100	525	---
DTS11044.160	1600	1600	580	100	550	---
DTS11044.165	1650	1650	550	100	575	---
DTS11044.170	1700	1700	520	100	600	---
DTS11044.175	1750	1750	500	100	625	---
DTS11044.180	1800	1800	480	100	650	---
DTS11044.185	1850	1850	450	100	675	---
DTS11044.190	1900	1900	420	100	700	---
DTS11044.195	1950	1950	400	100	725	---
DTS11044.200	2000	2000	380	100	750	---

\* The maximum safe load is given for a fully extended pair of slides, mounted on the major axis, with a load spread uniformly along the inner beam



WE RECOMMEND USE ON THE MAJOR AXIS  
DO NOT DISMANTLE THE SLIDE!!!

**Options:**

Various dimensions of the main profile, optional slide lengths, extensions, drillings, diameters and hole centers to customer's requirement.