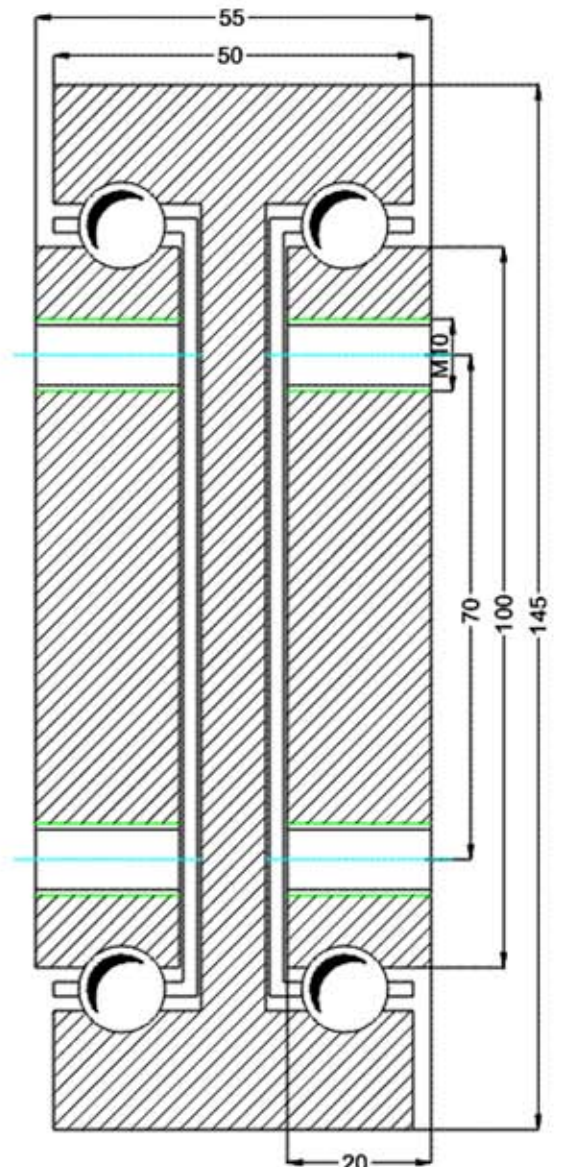


| Type: DTS-145 | | | | Part No. DTS14555 ... | | |
|---------------|----------------------------|-------------------------|----------------------|-----------------------|-------------|-------------|
| Part No. | Installation Length L (mm) | Extension Length D (mm) | * Load per pair (kg) | DRILLING TABLE | | |
| | | | | Dimension A | Dimension B | Dimension C |
| DTS14555.080 | 800 | 800 | 1400 | 100 | 150 | --- |
| DTS14555.085 | 850 | 850 | 1350 | 100 | 175 | --- |
| DTS14555.090 | 900 | 900 | 1300 | 100 | 200 | --- |
| DTS14555.095 | 950 | 950 | 1250 | 100 | 225 | --- |
| DTS14555.100 | 1000 | 1000 | 1200 | 100 | 250 | --- |
| DTS14555.105 | 1050 | 1050 | 1180 | 100 | 275 | --- |
| DTS14555.110 | 1100 | 1100 | 1150 | 100 | 300 | --- |
| DTS14555.115 | 1150 | 1150 | 1120 | 100 | 325 | --- |
| DTS14555.120 | 1200 | 1200 | 1100 | 100 | 350 | --- |
| DTS14555.125 | 1250 | 1250 | 1080 | 100 | 375 | --- |
| DTS14555.130 | 1300 | 1300 | 1050 | 100 | 400 | --- |
| DTS14555.135 | 1350 | 1350 | 1020 | 100 | 425 | --- |
| DTS14555.140 | 1400 | 1400 | 1000 | 100 | 450 | --- |
| DTS14555.145 | 1450 | 1450 | 980 | 100 | 475 | --- |
| DTS14555.150 | 1500 | 1500 | 950 | 100 | 500 | --- |
| DTS14555.155 | 1550 | 1550 | 920 | 100 | 525 | --- |
| DTS14555.160 | 1600 | 1600 | 900 | 100 | 550 | --- |
| DTS14555.165 | 1650 | 1650 | 880 | 100 | 575 | --- |
| DTS14555.170 | 1700 | 1700 | 850 | 100 | 600 | --- |
| DTS14555.175 | 1750 | 1750 | 820 | 100 | 625 | --- |
| DTS14555.180 | 1800 | 1800 | 800 | 100 | 650 | --- |
| DTS14555.185 | 1850 | 1850 | 780 | 100 | 675 | --- |
| DTS14555.190 | 1900 | 1900 | 750 | 100 | 700 | --- |
| DTS14555.195 | 1950 | 1950 | 720 | 100 | 725 | --- |
| DTS14555.200 | 2000 | 2000 | 700 | 100 | 750 | --- |
| DTS14555.205 | 2050 | 2050 | 670 | 100 | 775 | --- |
| DTS14555.210 | 2100 | 2100 | 650 | 100 | 800 | --- |
| DTS14555.215 | 2150 | 2150 | 630 | 100 | 825 | --- |
| DTS14555.220 | 2200 | 2200 | 600 | 100 | 850 | --- |
| DTS14555.225 | 2250 | 2250 | 550 | 100 | 875 | --- |
| DTS14555.230 | 2300 | 2300 | 500 | 100 | 900 | --- |
| DTS14555.235 | 2350 | 2350 | 450 | 100 | 925 | --- |
| DTS14555.240 | 2400 | 2400 | 400 | 100 | 950 | --- |
| DTS14555.245 | 2450 | 2450 | 350 | 100 | 975 | --- |
| DTS14555.250 | 2500 | 2500 | 300 | 100 | 1000 | --- |

* The maximum safe load is given for a fully extended pair of slides, mounted on the major axis, with a load spread uniformly along the inner beam



Options:

Various dimensions of the main profile, optional slide lengths, extensions, drillings, diameters and hole centers to customer's requirement.



WE RECOMMEND USE ON THE MAJOR AXIS
DO NOT DISMANTLE THE SLIDE!!!