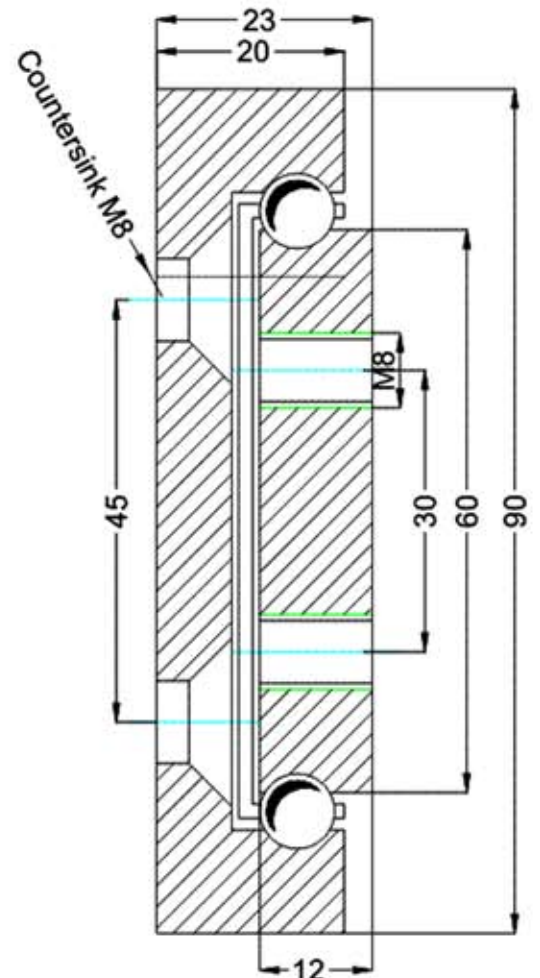


Type: OWS-90				Part No. OWS9023 ...		
Part No.	Installation Length L (mm)	Extension Length D (mm)	* Load per pair (kg)	DRILLING TABLE		
				Dimension A	Dimension B	Dimension C
OWS9023.060	600	300	1000	50	---	400
OWS9023.065	650	325	980	50	200	---
OWS9023.070	700	350	950	50	225	---
OWS9023.075	750	375	920	50	250	---
OWS9023.080	800	400	890	50	275	---
OWS9023.085	850	425	860	50	300	---
OWS9023.090	900	450	830	50	325	---
OWS9023.095	950	475	800	50	350	---
OWS9023.100	1000	500	770	50	375	---
OWS9023.105	1050	525	740	50	400	---
OWS9023.110	1100	550	710	50	425	---
OWS9023.115	1150	575	680	50	450	---
OWS9023.120	1200	600	650	50	475	---
OWS9023.125	1250	625	610	50	500	---
OWS9023.130	1300	650	580	50	525	---
OWS9023.135	1350	675	550	50	550	---
OWS9023.140	1400	700	530	50	575	---
OWS9023.145	1450	725	510	50	600	---
OWS9023.150	1500	750	480	50	625	---
OWS9023.155	1550	775	450	50	650	---
OWS9023.160	1600	800	420	50	675	---
OWS9023.165	1650	825	390	50	700	---
OWS9023.170	1700	850	360	100	650	---
OWS9023.175	1750	875	330	100	675	---
OWS9023.180	1800	900	290	100	700	---
OWS9023.185	1850	925	260	100	725	---
OWS9023.190	1900	950	230	100	750	---
OWS9023.195	1950	975	200	100	775	---
OWS9023.200	2000	1000	170	100	800	---

* The maximum safe load is given for a fully extended pair of slides, mounted on the major axis, with a load spread uniformly along the inner beam



WE RECOMMEND USE ON THE MAJOR AXIS
DO NOT DISMANTLE THE SLIDE!!!

Options:

Various dimensions of the main profile, optional slide lengths, extensions, drillings, diameters and hole centers to customer's requirement.