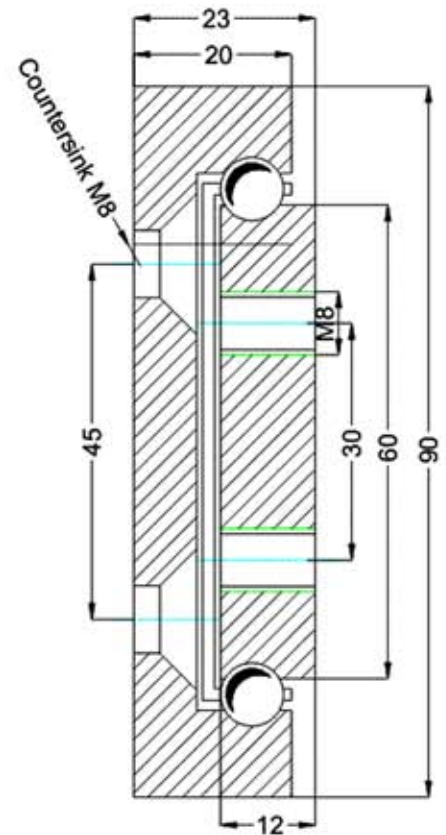


Type: OWST-90				Part No. OWST9023 ...		
Part No.	Installation Length L (mm)	Extension Length D (mm)	* Load per pair (kg)	DRILLING TABLE		
				Dimension A	Dimension B	Dimension C
OWST9023.060	600	600	1000	50	---	400
OWST9023.065	650	650	980	50	200	---
OWST9023.070	700	700	950	50	225	---
OWST9023.075	750	750	920	50	250	---
OWST9023.080	800	800	890	50	275	---
OWST9023.085	850	850	860	50	300	---
OWST9023.090	900	900	830	50	325	---
OWST9023.095	950	950	800	50	350	---
OWST9023.100	1000	1000	770	50	375	---
OWST9023.105	1050	1050	740	50	400	---
OWST9023.110	1100	1100	710	50	425	---
OWST9023.115	1150	1150	680	50	450	---
OWST9023.120	1200	1200	650	50	475	---
OWST9023.125	1250	1250	610	50	500	---
OWST9023.130	1300	1300	580	50	525	---
OWST9023.135	1350	1350	550	50	550	---
OWST9023.140	1400	1400	530	50	575	---
OWST9023.145	1450	1450	510	50	600	---
OWST9023.150	1500	1500	480	50	625	---
OWST9023.155	1550	1550	450	50	650	---
OWST9023.160	1600	1600	420	50	675	---
OWST9023.165	1650	1650	390	50	700	---
OWST9023.170	1700	1700	360	100	650	---
OWST9023.175	1750	1750	330	100	675	---
OWST9023.180	1800	1800	290	100	700	---
OWST9023.185	1850	1850	260	100	725	---
OWST9023.190	1900	1900	230	100	750	---
OWST9023.195	1950	1950	200	100	775	---
OWST9023.200	2000	2000	170	100	800	---

* The maximum safe load is given for a fully extended pair of slides, mounted on the major axis, with a load spread uniformly along the inner beam



WE RECOMMEND USE ON THE MAJOR AXIS
DO NOT DISMANTLE THE SLIDE!!!

Options:

Various dimensions of the main profile, optional slide lengths, extensions, drillings, diameters and hole centers to customer's requirement.